



WHERE THE FOREST MEETS THE PRAIRIE

Todd County

• MINNESOTA • EST. 1855 •

SOIL AND WATER CONSERVATION DISTRICT

215 1st Avenue South, Suite 104

Long Prairie, MN 56347

Phone: 320-732-2644 Fax: 320-732-4803

Todd County Soil and Water Conservation District Board of Supervisors Agenda

The Todd SWCD Board of Supervisors will be holding a meeting of SWCD Board of Supervisors on Thursday, March 12, 2026, beginning at 8:30 am in person at the Historic Courthouse, Commissioners Board Room located at 215 1st Ave S, Long Prairie, MN 56347.

Agenda Item #	Presenter
1. Routine Business	
1.1. Call to Order	Chairperson
1.2. Pledge of Allegiance	Chairperson
1.3. Call for Introductions	Chairperson
1.4. Act on Approving the Agenda	Chairperson
1.5. Act on Approving Minutes from January 8, 2026, Board Meeting	Secretary
1.6. Act on Approving Minutes from February 17, 2026, Board Meeting	Secretary
1.7. Act on Approving Program Summary Report—January and February 2026	Treasurer
1.8. Call for Conflict of Interest	Chairperson
1.9. Celebration- Thankful to have Commissioners Byers and Denny again this year! Shout out to Josh, WCTSA, and the combined Division Staff for a great Contractor Meeting! We were able to meet and welcome Brett Arne, our new BWSR BC!	
2. Reports	
2.1. Commissioners' Report	Byers and Denny 5 min
2.2. Director Report	Ossefoort 10 min
2.3. SWCD Manager Report	Anton 2 min
2.4. Staff Visual Report	Christiansen 5 min
2.5. Report on Staff Accomplishments	Anton 5 min
2.6. NRCS Report	Thoma 5 min
2.7. FSA Report	Fellbaum 5 min
2.8. 1W1P – Sauk- <i>Cold Spring Dam Assessment request for addition to 10-year CWMP</i>	Williamson 2 min
2.9. 1W1P – Red Eye- <i>Policy Meeting Monday 3/9- 10 pm at 500 Birch Ave NW Wadena</i>	Wendel 2 min
2.10. 1W1P – Long Prairie- <i>Policy meeting Thursday, March 19- 9 am – Long Prairie</i>	Katterhagen 2 min
2.11. 1W1P – Crow Wing	Wendel 2 min
2.12. 1W1P – Mississippi-Brainerd	Bebus 2 min
2.13. BWSR Report	Arne 15 min
3. Decisions needed for encumbering cost-share funds	
3.1. Baum 24.5-ac cover crop #2026.03.12-3.1 for \$1,527.54 from M-B 1W1P-C-24-0198	Scheve 2 min
3.2. Alstead 1-acre riparian buffer/ tree establishment #2026.03.12-3.2 for \$1,413.42 from FY26 Riparian Funds LP Watershed	Christiansen 2 min
3.3 Hanson stormwater control/tree establishment #2026.03.12.-3.3 for \$727.56 from FY26 Riparian Funds LP Watershed	Christiansen 2 min
3.4 Kunkel & Allen shoreline stabilization #2026.03.12-3.4 for \$21, 879 from M-B 1W1P C24-0198	Votruba 3 min
3.5 Katterhagen Tree Establishment #2026.03.12-3.5 for \$703.72 from FY26 Soil Health LP	Scheve 2 min
3.6 W. Sobiech 120ac. FSP #2026.03.12-3.6 for \$1125 from FY23 LP LCCMR- P23-2945	Anton 1 min

- 3.7 R. Sobiech 203ac. FSP #2026.03.12-3.7 for \$1200 from FY23 LP LCCMR-P23-2945 Anton 1 min
- 3.8 G. Sobiech 40ac. FSP #2026.03.12-3.8 for \$525 from FY23 LP LCCMR- P23-2945 Anton 1 min
- 3.9 Muehlbauer Group Waterway Diversion #2026.03.12.-3.9 for \$11,445 from FY26
Riparian Funds Sauk River watershed. Votruba 3 min
- 3.10 Renneberg 40ac. FSP #2026.03.12-3.8 for \$525 from FY23 LP LCCMR- P23-2945 Anton 1min

4. Decisions needed for cost-share contract amendments-None at the time of printing

5. Decision needed for payment of cost-share funds

- 5.1. Rettig 76ac. FSP #20260108-3.2 for \$795 from RED EYE WBIF- C24-0118.
Total Project Cost= \$1060 Anton 2 min
- 5.2. P. Ploof 65ac. FSP #05.08.2025-3.5 for \$525 from M-B WBIF- C24-0198.
Total project cost- \$700. Project came in \$150.00 less. Anton 2 min
- 5.3 T. Ploof 91ac FSP #05082025-3.1 for \$712.50 from M-B WBIF- C24-0198
Total Cost of Project- \$950 Anton 2 min
- 5.4 Grundter 80ac FSP #20251113.3.1 for \$825 from FY23 LP LCCMR P23-2945
Total cost of project- \$1100 Anton 2 min

NOTE to BOARD: Pending confirmation from Jared House, BWSR RCPP Soil Health Lead, we may have 6 additional soil health payouts to review and approve.

Technicians may be excused

6. Decisions needed for operations-

- 6.1. Review for approval of the resolution for Minor Amendment to the Sauk River 10-year Mgmt. Plan to add “Assess the Cold Spring Dam for modifications opportunities to improve ecological functions; fish passage; water quality, and altered hydrology improvements” as a Priority Implementation Action. Anton 5 min
- 6.2 Select Conservation Farmer of the Year Award recipient
- 6.3. Select Land Stewardship Award recipient
- 6.4 Approve to renew membership with the Soil Health Coalition at \$25.00/yr.
- 6.5 Approve new fees for irrigation scheduling services at \$500 per field if only signed up for one field. \$400 per field if signed up for more than one field to match Wadena EOT.
- 6.6 Review and approve annual report and newsletter for printing
- 6.7 Approve letter of support by inclusion into the Morrison and Crow Wing application for a “forest health” grant in the Brainerd Lakes Conservation Focus Area (includes small easterly sections of Todd) Anton 2 min

7. Discussion items

Anton 10 min

- 7.1 USFWS and The Nature Conservancy partnership on administering a ~\$25,000 grant for wetland restoration work in partnership with Todd SWCD
- 7.2 Sourcewell Grant application for Fairy Lakes Park Trail

8. Contracts and documents approved by Chair

- 8.1.** Chair approved by phone on 2/9/2026 Marthaler amendment to increase cost-share from Anton 1 min \$109,997.25 to \$115,978.50 to match approval amounts by the Sauk WBIF Steering (Extra \$\$ provided by Douglas as one of their projects fell through). Cost-share amount now at 75%.

9. Informational

- 9.1.** 2nd Friday of the month –Radio Show
- 9.2.** AIS Inspection Contractor Selection and RFP process for Services -- 2026
- 9.3.** Signed BWSR FY26 (P26-0856) Soil Health Delivery grant in the amount of \$40,000
- 9.4.** CLA audit findings will be delivered at April’s Board Meeting on April 9 at 8:45 am
- 9.5.** Feedlot Meeting has been publicly noticed for both Commissioners and Supervisors for March 18, 2026, at the Clarissa Ballroom. Meet and Greet at 9:30. Meeting begins at 10:00am.
- 9.6.** BWSR Prevailing Wage Guidance- manager will speak on this during her report.
- 9.7.** Invitation from Brett Arne, Supervisor Training March 27 9-noon, Detroit Lakes- good refresher for seasoned supervisors and training for new supervisors

The next regularly scheduled meeting for the Todd SWCD Board of Supervisors will be Thursday, April 9, 2026, at 8:30 a.m. at the Historic Courthouse in the Commissioner’s Board Room located at 215 1st Avenue South, Long Prairie, MN 56347.



Minutes from January 8, 2026 Regular Board Meeting

The meeting was held in person at Todd County Historic Courthouse, Commissioner's board room located at 215 1st Ave S, Long Prairie, MN 56347.

Vice Chairperson James called the Thursday, January 8, 2026 meeting to order at 8:30 a.m.

The Pledge of Allegiance was recited.

Call for Introductions.

Board members present in person were: Dale Katterhagen, Barb James, Tom Williamson, Larry Bebus and Wayne Wendel.

Katterhagen joined the meeting at 8:57 a.m.

Others present in person were: Adam Ossefoort, Division Director, Deja Anton, District Manager, Sarah Katterhagen, Program Coordinator, Dylan Pratt, Conservation Technician, Josh Votruba, Conservation Technician, Kasen Christiansen, Conservation Technician, Alyssa Scheve, Conservation Technician, Jessica Moore, Conservation Technician, Luke Thoma, NRCS, Bob Byers, Todd County Commissioner, and Darren Mayers, BWSR.

James asked if there were any additions or corrections to the agenda. Wendel made a motion, seconded by Williamson to accept the revised agenda for the regular January 8, 2026 meeting.

3.4. Add on: Encumbering request from Johnson for FSP in the amount of \$825.

9.7. Add on: P26-0150 2026 Buffer Law grant agreement executed in the amount of \$20,000.

9.8. Add on: Scott Becker is retiring from Precipitation Network Program.

9.9 Add on: Audit Rates Survey.

Affirmative: James, Williamson, Bebus and Wendel. Motion Carried.

Bebus made a motion, seconded by Williamson to approve the minutes as distributed from the December 11, 2025 regular board meeting. Affirmative: James, Williamson, Bebus and Wendel. Motion Carried.

James asked the board to review the December 2025 Treasurer's Report. Program Coordinator summarized disbursement and revenues. Williamson made a motion, seconded by Bebus to accept December's 2025 Treasurer's Report with receipts totaling \$424,812.01 and disbursements totaling \$254,016.63. Affirmative: James, Williamson, Bebus and Wendel. Motion Carried.

James called for conflict of interest. No conflict of interest was reported.

Celebration: Happy New Years from the District Manager.

Reports:



Commissioner's Report: Commissioner Byers acknowledged the great work the SWCD is doing and to keep up the good work.

Director Report: Ossefoort presented his visual report which showed history of number of permits and revenue from permits. Ossefoort reported there is one request for a solar panel farm and a cannabis application was withdrawn. Anton recommended Ossefoort to request SWCD representation on solar panel requests.

The next Comprehensive plan meeting date is set for January 27, 2026.

Staff Visual Report: See above from Ossefoort.

Manager Report on Staff Accomplishments:

Anton reported that Moore completed one nutrient management plan and she covered the office when staff were out over the Holidays.

Anton reported that Scheve has been busy with the RCPP funding, working on easements, windbreak designs and went on the radio.

Anton reported that S. Katterhagen is working on the Long Prairie WBIF grant reconciliation, 40% of the trees are sold, and working on yearend closeouts.

Anton reported that Christiansen is working on easements, two wetland violations were resolved, Marthaler cost share project, and one forest stewardship cost share contract.

Anton reported that Votruba completed spot checks, wrote a plant article and has taken tree calls.

Anton reported Pratt has been busy with nineteen site visits, a tree planting plan and attended MASWCD Convention.

SWCD Manager Report: Anton presented her visual report. Report is available upon request. Some highlights include: Anton attended a BWSR Cradle to Grave training, thanked the board for the gift basket, Long Prairie Watershed plan has been translated to Spanish, showed a drinking cup video, is planning an AIS committee meeting and had meetings regarding the Marthaler cost share project.

NRCS Report: Thoma reported the NRCS EQIP ranking is based on local work group priorities and EQIP ranking deadline has not been determined.

Katterhagen joined the meeting at 8:57 a.m.

FSA Report: No report.

1W1P- Sauk River Report: No updates.



WHERE THE FOREST MEETS THE PRAIRIE

Todd County

● MINNESOTA ● EST. 1855 ●

SOIL AND WATER CONSERVATION DISTRICT

215 1st Avenue South, Suite 104

Long Prairie, MN 56347

Phone: 320-732-2644 Fax: 320-732-4803

1W1P Red Eye Report: No updates.

1W1P Long Prairie Report: No updates.

1W1P Crow Wing Report: No updates.

1W1P Mississippi Brainerd Report: No updates.

BWSR Report: Mayers reminded the board grant reporting deadline is February 1, 2026. Mayers gave a presentation on duties of SWCD Supervisors and reminded the board deadline to file for elections is May 19, 2026.

Decisions needed for encumbering cost share funds:

Williamson made a motion, seconded by Bebus to approve encumbering Long Prairie LCCMR funds for Mick, C#20260108-3.1 in the amount of \$622.50 for a forest stewardship plan. Affirmative: Katterhagen, James, Williamson, Bebus and Wendel. Motion Carried.

Bebus made a motion, seconded by Katterhagen to approve encumbering C25-0118 Red Eye 3.0 funds for Rettig, C#20260108-3.2 in the amount of \$795 for a forest stewardship plan. Affirmative: Katterhagen, James, Williamson, Bebus and Wendel. Motion Carried.

Williamson made a motion, seconded by Wendel to approve encumbering funds for Padua Lakes Partnership, C#20260108-3.3 in the amount of \$109,997.25 for a field erosion control project pending final approval by the Sauk WBIF technical steering committee. Affirmative: Katterhagen, James, Williamson, Bebus and Wendel. Motion Carried.

Katterhagen made a motion, seconded by Williamson to approve encumbering C24-0198 Mississippi River Brainerd funds for Johnson, C#20260108-3.4 in the amount of \$825 for a forest stewardship plan. Affirmative: Katterhagen, James, Williamson, Bebus and Wendel. Motion Carried.

Decisions needed for cost share contract amendments:

Bebus made a motion, seconded by Katterhagen to approve request for additional C24-0198 Mississippi River Brainerd funds for Baum, C#06122025-3.4 in the amount of \$375 for a new total of \$3,187.50 for a nutrient management plan. Affirmative: Katterhagen, James, Williamson, Bebus and Wendel. Motion Carried.

Wendel made a motion, seconded by Williamson to approve amendment for extension for Zimmer, C#06122025-3.5 until November 1, 2026 for funds for technical engineering. Affirmative: Katterhagen, James, Williamson, Bebus and Wendel. Motion Carried.

Wendel made a motion, seconded by Bebus to approve amendment for additional funds for Lamusga, C#05082025-3.2 in the amount of \$14,166.82 for a new total cost share of \$80,904 pending approval from Long Prairie Steering Committee and exact source will depend on Long Prairie Steering Committee approval. Affirmative: Katterhagen, James, Williamson, Bebus and Wendel. Motion Carried.



Decision needed for payment of cost share funds:

Katterhagen made a motion, seconded by Williamson to approve payment of C24-0198 Mississippi Brainerd funds for Baum, C#061222025 in the amount of \$3,197.50 for a nutrient management plan. Affirmative: Katterhagen, James, Williamson, Bebus and Wendel. Motion Carried.

Katterhagen made a motion, seconded by Williamson to approve payment of C25-0169 Big Swan Phosphorus Reduction grant for Swan Lake LID, C#08.14.2025-3.8 in the amount of \$1,350 for engineering assistance and contractor oversight. Affirmative: Katterhagen, James, Williamson, Bebus and Wendel. Motion Carried.

Wendel made a motion, seconded by Bebus to approve payment of Long Prairie WBIF funds for Lamusga, C#05082025-3.2X in the amount of \$80,904 pending approval and funding source approval from Long Prairie steering committee. Affirmative: Katterhagen, James, Williamson, Bebus and Wendel. Motion Carried.

Pratt, Votruba, Christiansen, Scheve and Moore left the meeting at 9:38 a.m.

Decisions needed for operations:

Bebus made a motion, seconded by Williamson to approve 2026 Plan of Action. Affirmative: Katterhagen, James, Williamson, Bebus and Wendel. Motion Carried.

Katterhagen made a motion, seconded by Bebus to approve policy and procedure related to per diems. Affirmative: Katterhagen, James, Williamson, Bebus and Wendel. Motion Carried.

Katterhagen made a motion, seconded by Williamson to approve MASWCD FY26 dues in the amount of \$7,654.59. Affirmative: Katterhagen, James, Williamson and Bebus. Opposed: Wendel. Motion Carried.

Katterhagen made motion, seconded by Bebus to approve MCIT invoice for PC in the amount of \$3,857 and WC in the amount of \$261. Affirmative: Katterhagen, James, Williamson, Bebus and Wendel. Motion Carried.

Bebus made a motion, seconded by Williamson to approve contribution toward Envirothon in the amount of \$150. Affirmative: Katterhagen, James, Williamson, Bebus and Wendel. Motion Carried.

Discussion Items:

Agenda and discussion items for the Joint Meeting: Anton recommended the joint meeting to be held on Tuesday, February 17, 2026. Commissioner Byers noted that it would work. Anton suggested presenting on 2025 cost share projects, inform the Commissioner's about the Long Prairie Watershed plan being translated to Spanish, and 2025 SWCD Annual report.

Outline for the SWCD Annual Report: Anton presented an outline for the SWCD Annual Report.

Contracts and documents approved by the Chair:



None.

Informational:

The 2nd Friday of the month is the radio show.

The Long Prairie LCCMR grant amendment was approved on December 15, 2025.

Anton informed the board the AIS report is available upon request.

The 2026 standard mileage rate is 72.5 cents per mile.

Supervisors received a copy of award nominees for 2026.

Supervisors received a copy of the article called “Todd SWCD backed manure put closure prepared by BWSR.

P26-0150 2026 Buffer Law grant agreement was executed in the amount of \$20,000.

Scott Becker retired from being a volunteer for the Precipitation Network program. Chairperson signed a thank you letter.

Supervisors received a copy of audit rates survey.

Bebus made a motion, seconded by Wendel to obtain audit bids for 206 Audit.

Discussion: Anton will check to review the current agreement length. Affirmative: Katterhagen, James, Williamson, Bebus and Wendel. Motion Carried.

In February, the Todd SWCD Board of Supervisors will hold a joint meeting with the Todd County Commissioners. The exact time and date of the joint meeting is yet to be determined. Public notice will be posted ahead of the meeting.

The next scheduled meeting for the Todd SWCD Board of Supervisors will be Thursday, March 12, 2026 at 8:30 a.m. The meeting will take place at the Historic Courthouse in the Commissioner’s Board Room located at 215 1st Avenue South, Long Prairie, MN 56347.

Vice Chairperson James adjourned the meeting at 10:26 a.m.

S. Katterhagen, Byers, and Mayers left the meeting at 10:26 a.m.

Immediately following the regular meeting, Todd SWCD Board of Supervisors held a closed meeting for the purpose of the annual assessment of job performance of the District Manager.



The board moved into a closed session to complete the annual review of District Manager, Deja Anton.

Chairperson Katterhagen opened the Closed meeting at 10:37 AM

The board completed the review of Deja Anton, District Manager, and established a positive review for the year of 2025.

Chairperson Katterhagen reopened the regular meeting upon completion of the review.

Wendel made a motion, seconded by James to adjourn the meeting at 11:08 AM.



Sarah Katterhagen, Minute Preparer

Date

Deja Anton, SWCD District Manager

Date

Tom Williamson, Secretary

Date



Minutes of the Joint Meeting of the Todd County Board of Commissioners and Todd County SWCD Supervisors held on February 17th, 2026

Call to Order

The Todd County Board of Commissioners met in the Commissioner’s Board Room in the City of Long Prairie, MN on the 17th day of February, 2026 with all Board of Commissioner members present and with all SWCD Supervisors present.

On motion by Becker and second by Neumann, the joint meeting was called to order for the Board of Commissioners at 9:10 a.m.

On motion by James and second by Bebus, the joint meeting was called to order for the SWCD Supervisors at 9:10 a.m.

Approval of Agenda

On motion by Wendel and second by James, the following motion was introduced and adopted by unanimous vote: To approve the agenda as presented.

On motion by Denny and second by Noska, the following motion was introduced and adopted by unanimous vote: To approve the agenda as presented.

SWCD Presentation

Deja Anton, District Manager presented the following information for general knowledge and discussion between the board members:

- Introduction and Presentation of 2025 SWCD County Matter Accomplishment

Partners Letters and Presentation

- Letters of Appreciation were read for discussion
- Darren Mayers, Board of Soil & Water Resources provided a summary of appreciation for Todd SWCD’s services and programs.

General Discussion

A list of upcoming activities, meetings and project updates was provided for the SWCD Supervisors to review.

Adjourn

On motion by James and second by Williamson, the SWCD Board adjourned the joint meeting by unanimous vote at 9:55 a.m.

On motion by Denny and second by Noska, the Todd County Board of Commissioners adjourned the joint meeting by unanimous vote at 9:55 a.m.

On a motion by Becker and second by Denny, the preceding minutes of the Joint County Board and Todd SWCD Board of Supervisors meeting held February 17th, 2026 were duly approved by unanimous vote at the Todd County Board of Commissioners at the Regular Board Meeting held on March 4th, 2026.

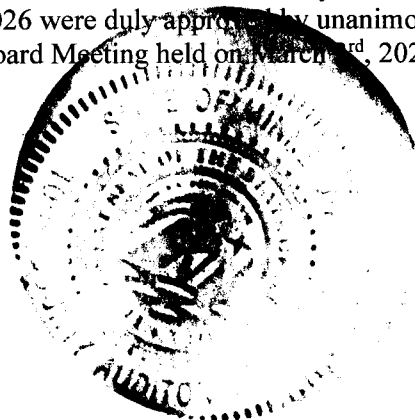
Witness my hand and seal:



 Bob Byers, County Board Chairperson



 Denise Gaida, Todd County Auditor-Treasurer



**TODD SOIL & WATER CONSERVATION DISTRICT
SWCD TREASURER'S MONTHLY REPORT
PROGRAM SUMMARY**

PROGRAM	CASH BALANCE 1/1/2026	RECEIPTS	DISBURSEMENTS	ADJUSTMENTS	CASH BALANCE 1/31/2026
District Savings Account	\$ 281,174.22				\$ 281,174.22
Change Fund	\$ 20.00				\$ 20.00
General/Misc. Revenue/MCIT	\$ 2,754.59	\$ 27.00	\$ 25.00		\$ 2,756.59
Tree Program	\$ 23,188.89	\$ 9,279.25	\$ 1,446.00		\$ 31,022.14
Todd County Allocation	\$ -				\$ -
District Operations	\$ 0.01		\$ 12,665.44		\$ (12,665.43)
MPCA Feedlot Program/County Program - FY25	\$ 47,554.59		\$ 1,050.00		\$ 46,504.59
County Appropriation for Feedlot Program	\$ 43,910.02				\$ 43,910.02
Feedlot Performance funds	\$ 12,368.14				\$ 12,368.14
NRBG Water Plan Funds/County Program - FY26	\$ 14,676.00				\$ 14,676.00
Water Plan Levy	\$ 1,249.89	\$ 140.73	\$ 175.00		\$ 1,215.62
NRBG Wetland Program Funds/County Program - FY26	\$ 21,641.00				\$ 21,641.00
County Appropriation for Wetland Program	\$ -				\$ -
Todd County AIS Program/County Program	\$ 74,464.91				\$ 74,464.91
Todd County Riparian AID Education	\$ 17,100.00				\$ 17,100.00
Todd County Riparian AID Cost Share Program - 2024	\$ 23,281.37				\$ 23,281.37
Todd County Riparian AID Cost Share Program - 2025	\$ 21,861.85				\$ 21,861.85
Todd County Riparian AID Cost Share Program - 2026	\$ 65,789.00				\$ 65,789.00
MN State Grant	\$ (652.78)	\$ 5,000.00			\$ 4,347.22
Ob Well Program	\$ (3,900.00)				\$ (3,900.00)
C24-0174 Soil Health Practitioner Grant / Staffing	\$ 198,032.73		\$ 10.00		\$ 198,022.73
2025 MN Grant SWCD AID	\$ 45,709.99				\$ 45,709.99
2026 MN Grant SWCD AID	\$ 137,696.12				\$ 137,696.12
FY2026 Buffer Implementation	\$ -	\$ 20,000.00			\$ 20,000.00
FY2026 / 2027 Conservation Contracts	\$ 38,768.00				\$ 38,768.00
FY2026 / 2027 Conservation Delivery	\$ 40,108.00				\$ 40,108.00
P25-0558 MN Soil Health Delivery Grant C/S	\$ 9,816.33				\$ 9,816.33
P25-0558 MN Soil Health Delivery Grant Project Development	\$ (2,392.57)				\$ (2,392.57)
P25-0558 MN Soil Health Delivery Grant Technical Assistance	\$ (1,943.31)				\$ (1,943.31)
P26-0058 2026 RCPP Soil Health Practices Technical Assistance	\$ 25,891.88				\$ 25,891.88
P26-0058 2026 RCPP Soil Health Practices Cost Share	\$ 150,000.00				\$ 150,000.00
C23-3483 Long Prairie Collaborative WBIF 2023 Admin	\$ 48,635.58				\$ 48,635.58
C23-3483 Long Prairie Collaborative WBIF 2023 PD	\$ 55,833.87		\$ 300.00		\$ 55,533.87
C23-3483 Long Prairie Collaborative WBIF 2023 TA	\$ (12,066.22)				\$ (12,066.22)
C23-3483 Long Prairie Collaborative WBIF 2023 CS	\$ (99,510.80)				\$ (99,510.80)
P25-0471 2025 - Long Prairie Watershed CRP Incentive Grant	\$ 25,470.00				\$ 25,470.00
C25-0196 Long Prairie Collaborative WBIF 2025 Admin	\$ 79,533.94				\$ 79,533.94
C25-0196 Long Prairie Collaborative WBIF 2025 PD	\$ 105,908.41				\$ 105,908.41
C25-0196 Long Prairie Collaborative WBIF 2025 TA	\$ 113,693.60				\$ 113,693.60
C25-0196 Long Prairie Collaborative WBIF 2025 CS	\$ 86,255.14				\$ 86,255.14
C25-0169 Big Swan Phosphorus Grant Tier 1	\$ 53,127.11		\$ 1,350.00		\$ 51,777.11
Red Eye One Watershed, One Plan Reimbursement - Grant #2	\$ (47,124.83)	\$ 47,124.83			\$ -
C25-0118 Red Eye One Watershed, One Plan Reimbursement - Grant #3	\$ (4,643.31)				\$ (4,643.31)
Sauk River One Watershed, One Plan Technical Reimbursement Grant #1	\$ (772.65)	\$ 772.65			\$ -
Sauk River One Watershed, One Plan CS Reimbursement Grant #1	\$ -				\$ -
C24-0088 Sauk River One Watershed, One Plan - Reimbursement Grant #2	\$ (58,513.30)	\$ 3,419.31			\$ (55,093.99)
P25-0821 CRP Sauk River Watershed Incentive Grant	\$ (21,148.00)				\$ (21,148.00)
C24-0198 Mississippi River One Watershed - Implementation	\$ (46,810.63)		\$ 3,187.50		\$ (49,998.13)
C25-0310 Crow Wing WBIF Phase #1	\$ (4,670.95)				\$ (4,670.95)
FY2023 Long Prairie Watershed LCCMR Grant	\$ (13,974.72)				\$ (13,974.72)
MN Ag Water Program/Partnership- Reimbursement	\$ (3,106.35)				\$ (3,106.35)
WCTSA Nutrient Management/Partnership Reimbursement	\$ (4,391.30)	\$ 5,065.70			\$ 674.40
TOTAL	\$ 1,539,893.46	\$ 90,829.47	\$ 20,208.94	\$ -	\$ 1,610,513.99

Prepared by: Sarah Katterhagen, Program Coordinator

Date

Reviewed by: Deja Anton, SWCD District Manager

Date

Larry Bebus, District Treasurer

Date



ACCOUNT ACTIVITY REPORT

Page Break Option: 1 1 - Page Break by FUND
2 - Page Break by DEPT

Print Service Dates: No

Sort: 1st: 2nd 3rd 4th 5th 6th
G D T N M W

F - G/L Object Within Fund Number
G - G/L Account Number
P - G/L Object Within Dept Number
D - Transaction Date
M - G/L Month & Year
N - Vendor/Payer Name
T - Type Of Transaction
W - Receipt/Warrant Number

Range Subtotals: 1 1 - No Subtotals
2 - Detail and Subtotals by OBJECT Range
3 - Subtotals only by OBJECT Range
4 - Account Totals and Subtotals by OBJECT Range
5 - Account Totals and Subtotals by PROGRAM Range

Report Basis: 1 Cash Only This Basis?: No

Print YTD Totals: No Type of Report: 1 1 - DETAIL
2 - ABBREVIATED

Specific Dates: From: 01/01/2026 Thru: 01/31/2026

Comment:
FUND Range From 79 Thru 79
DEPT Range From 603 Thru 603



Tran	Vendor	G/L	Receipt/Warrant		Seq	AMOUNT	Description / Service Dates	Invoice	Accr	R1R2
SC	Type	Mont	NUMBER	DATE				Number	Cd	Basis
DEPT 603 - S&W (FEEDLOT-CO MATCH)										
PROGRAM 000 - PROGRAM										
79-603-000-0000-5301 - MN GRANTS (GENERAL/AGENCY PARTNERS)										
RE	RE	MN State - MMB	01/2026	149407	01/20/2026	222	2,500.00 - Easement			1
RE	RE	MN State - MMB	01/2026	149407	01/20/2026	222	2,500.00 - Easement			1
79-603-000-0000-5301 - MN GRANTS (GENERAL/AGENCY)						Total	5,000.00 -			
79-603-000-0000-5530 - FEE - DEPT PRJ SALES										
RE	RE	Todd County Soil & Water	01/2026	149323	01/09/2026	222	53.69 - 25 Trees - Ray Kurowski			1
RE	RE	Todd County Soil & Water	01/2026	149323	01/09/2026	222	284.54 - 125 Trees, 1 potted - Janet Um			1
RE	RE	Todd County Soil & Water	01/2026	149323	01/09/2026	222	107.35 - 50 Trees - Harry Tichy			1
RE	RE	Todd County Soil & Water	01/2026	149323	01/09/2026	222	72.48 - 25 Trees, 5 Reg Tubes - David			1
RE	RE	Todd County Soil & Water	01/2026	149323	01/09/2026	222	252.60 - 100 Trees, 5 Vent, etc- Rebecc			1
RE	RE	Todd County Soil & Water	01/2026	149323	01/09/2026	222	53.69 - 25 Trees - Thomas Winchester			1
RE	RE	Todd County Soil & Water	01/2026	149323	01/09/2026	222	53.69 - 25 Trees - Brian Hartmann			1
RE	RE	Todd County Soil & Water	01/2026	149323	01/09/2026	222	91.81 - 3 Potted, 10 Vent - Marc Pauls			1
RE	RE	Todd County Soil & Water	01/2026	149323	01/09/2026	222	53.69 - 25 Trees - Able Masonry & Conc			1
RE	RE	Todd County Soil & Water	01/2026	149323	01/09/2026	222	53.69 - 25 Trees - Linus Koval			1
RE	RE	Todd County Soil & Water	01/2026	149323	01/09/2026	222	214.75 - 100 Trees - Stanley Martin			1
RE	RE	Todd County Soil & Water	01/2026	149323	01/09/2026	222	161.06 - 75 Trees - Matt Kramer			1
RE	RE	Todd County Soil & Water	01/2026	149323	01/09/2026	222	241.60 - 3 Kits - Stephen Gudgell			1
RE	RE	Todd County Soil & Water	01/2026	149323	01/09/2026	222	53.69 - 25 Trees - Jane Steinmetz			1
RE	RE	Todd County Soil & Water	01/2026	149323	01/09/2026	222	53.69 - 25 Trees - Shelly Neubauer			1
RE	RE	Todd County Soil & Water	01/2026	149323	01/09/2026	222	107.38 - 50 Trees - Kim Wallace			1
RE	RE	Todd County Soil & Water	01/2026	149323	01/09/2026	222	214.75 - 100 Trees - Heather Olson			1
RE	RE	Todd County Soil & Water	01/2026	149323	01/09/2026	222	161.06 - 75 Trees - Kristina Thorsett			1
RE	RE	Todd County Soil & Water	01/2026	149323	01/09/2026	222	53.69 - 25 Trees - Linda Machovec			1
RE	RE	Todd County Soil & Water	01/2026	149323	01/09/2026	222	107.38 - 50 Trees - Juliann Middendorf			1
RE	RE	Todd County Soil & Water	01/2026	149323	01/09/2026	222	107.38 - 50 Trees - Michael Sudbeck			1
RE	RE	Todd County Soil & Water	01/2026	149323	01/09/2026	222	53.69 - 25 Trees - Jack Mechels			1
RE	RE	Todd County Soil & Water	01/2026	149323	01/09/2026	222	215.93 - 100 Trees - Nathan Kolles			1

**** **Todd County** ****

ACCOUNT ACTIVITY REPORT

From: 01/01/2026 Thru: 01/31/2026

Report Basis: 1



Tran	G/L	Receipt/Warrant	Invoice	Accr								
SC	Type	Vendor	Mont	NUMBER	DATE	Seq	AMOUNT	Description / Service Dates	Number	Cd	Basis	R1R2
79-603-000-0000-5530 - FEE - DEPT PRJ SALES												
RE	RE	Todd County Soil & Water	01/2026	149323	01/09/2026	222	107.38-	50 Trees - Richard Gutormson				1
RE	RE	Todd County Soil & Water	01/2026	149323	01/09/2026	222	644.25-	300 Trees - James Hlatky				1
RE	RE	Todd County Soil & Water	01/2026	149323	01/09/2026	222	107.38-	50 Trees - James Hlatky				1
RE	RE	Todd County Soil & Water	01/2026	149323	01/09/2026	222	215.75-	100 Trees - Steve Rosdahl				1
RE	RE	Todd County Soil & Water	01/2026	149409	01/20/2026	222	308.70-	100 Trees, 25 Reg Tubes - Kevi				1
RE	RE	Todd County Soil & Water	01/2026	149409	01/20/2026	222	107.37-	50 Trees - Alyssa Scheve				1
RE	RE	Todd County Soil & Water	01/2026	149409	01/20/2026	222	322.13-	150 Trees - James Gotta				1
RE	RE	Todd County Soil & Water	01/2026	149409	01/20/2026	222	214.75-	100 Trees - Dennis Dombouy				1
RE	RE	Todd County Soil & Water	01/2026	149409	01/20/2026	222	107.38-	50 Trees - Sheri Stang				1
RE	RE	Todd County Soil & Water	01/2026	149409	01/20/2026	222	53.69-	25 Trees - Vern Desotell				1
RE	RE	Todd County Soil & Water	01/2026	149409	01/20/2026	222	53.69-	25 Trees - Ken Voller				1
RE	RE	Todd County Soil & Water	01/2026	149409	01/20/2026	222	107.38-	50 Trees - Keith Olander				1
RE	RE	Todd County Soil & Water	01/2026	149409	01/20/2026	222	375.81-	175 Trees - Michelle Vanhaver				1
RE	RE	Todd County Soil & Water	01/2026	149409	01/20/2026	222	322.13-	20 Potted - Jonathan Lloyd				1
RE	RE	Todd County Soil & Water	01/2026	149409	01/20/2026	222	107.38-	50 Trees - Kathy Harren				1
RE	RE	Todd County Soil & Water	01/2026	149516	01/27/2026	222	322.13-	150 Trees - Carol Ervasti				1
RE	RE	Todd County Soil & Water	01/2026	149516	01/27/2026	222	268.44-	125 Trees - Bryan Pesta				1
RE	RE	Todd County Soil & Water	01/2026	149516	01/27/2026	222	214.75-	100 Trees - Nathan Hedin				1
RE	RE	Todd County Soil & Water	01/2026	149516	01/27/2026	222	214.75-	100 Trees - Robbie Klimmek				1
RE	RE	Todd County Soil & Water	01/2026	149516	01/27/2026	222	107.38-	50 Trees - Scott Maus				1
RE	RE	Todd County Soil & Water	01/2026	149516	01/27/2026	222	107.38-	50 Trees - Heidi Iten				1
RE	RE	Todd County Soil & Water	01/2026	149516	01/27/2026	222	53.68-	25 Trees - Brian Neubauer				1
RE	RE	Todd County Soil & Water	01/2026	149516	01/27/2026	222	52.69-	25 Trees - Steve Rosdahl				1
RE	RE	Todd County Soil & Water	01/2026	149516	01/27/2026	222	53.69-	25 Trees - Rich Lukasavitz				1
RE	RE	Todd County Soil & Water	01/2026	149516	01/27/2026	222	295.28-	100 Trees, 1 Kit - Gennifer An				1
RE	RE	Todd County Soil & Water	01/2026	149516	01/27/2026	222	214.75-	100 Trees - Gennifer Anderson				1
RE	RE	Todd County Soil & Water	01/2026	149516	01/27/2026	222	107.37-	50 Trees - Nathan Minke				1
RE	RE	Todd County Soil & Water	01/2026	149516	01/27/2026	222	161.06-	2 Kits - J. Kincade				1
RE	RE	Todd County Soil & Water	01/2026	149521	01/28/2026	222	107.38-	50 Trees - Aaron Baufield				1
RE	RE	Todd County Soil & Water	01/2026	149521	01/28/2026	222	483.19-	225 Trees - Brett Freese				1



Tran	SC	Type	Vendor	G/L	Receipt/Warrant	Seq	AMOUNT	Description / Service Dates	Invoice	Accr	R1R2	
				Mont	NUMBER	DATE			Number	Cd	Basis	
			79-603-000-0000-5530 - FEE - DEPT PRJ SALES									
RE	RE		Todd County Soil & Water	01/2026	149521	01/28/2026	222	107.38 -	50 Trees - Sunset View Associa		1	
RE	RE		Todd County Soil & Water	01/2026	149521	01/28/2026	222	268.44 -	125 Trees - Tracy Karlson		1	
RE	RE		Todd County Soil & Water	01/2026	149560	01/30/2026	222	161.06 -	75 Trees - Michelle Vanhaverma		1	
			79-603-000-0000-5530 - FEE - DEPT PRJ SALES									Total
								9,279.25 -				
			79-603-000-0000-5846 - INSURANCE DIVIDEND									
RE	RE		Todd County Soil & Water	01/2026	149323	01/09/2026	222	27.00 -	2025 Div - MCIT		1	
			79-603-000-0000-5846 - INSURANCE DIVIDEND									Total
								27.00 -				
			79-603-000-0000-6103 - PER DIEM									
DI	DI		12811-BEBUS/LARRY	01/2026	245768	01/12/2026	333	125.00	SWCD Board Meeting	1/8/26	1	
DI	DI		17255-JAMES/BARBARA	01/2026	905720	01/12/2026	333	125.00	SWCD Board Meeting	1/8/25	1	
DI	DI		5981-KATTERHAGEN/DALE	01/2026	905721	01/12/2026	333	125.00	Long Prairie WBIF - Policy Mtg	11/20/25	1	
DI	DI		5981-KATTERHAGEN/DALE	01/2026	905721	01/12/2026	333	125.00	SWCD Board Meeting	1/8/25	1	
DI	DI		23002-WENDEL/WAYNE	01/2026	245808	01/12/2026	333	125.00	SWCD Board Meeting	1/8/25	1	
DI	DI		9450-WILLIAMSON/THOMAS	01/2026	905729	01/12/2026	333	125.00	SWCD Board Meeting	1/8/26	1	
			79-603-000-0000-6103 - PER DIEM									Total
								750.00				
			79-603-000-0000-6174 - WORKERS COMP INSURANCE									
DI	DI		4319-MCIT	01/2026	905723	01/12/2026	333	261.00	WC Renewal for SWCD Supervisor	21301R	1	
			79-603-000-0000-6174 - WORKERS COMP INSURANCE									Total
								261.00				
			79-603-000-0000-6245 - MEMBERSHIP DUES & REGISTRATIONS									
DI	DI		11418-MASWCD	01/2026	245785	01/12/2026	333	7,654.59	MASWCD FY 2026 Dues	3785	1	
			79-603-000-0000-6245 - MEMBERSHIP DUES & REGISTRATIONS									Total
								7,654.59				
			79-603-000-0000-6331 - TRAVEL AND EXPENSE (MILEAGE)									
DI	DI		12811-BEBUS/LARRY	01/2026	245768	01/12/2026	333	27.55	Mileage	1/8/26	1	
DI	DI		17255-JAMES/BARBARA	01/2026	905720	01/12/2026	333	27.55	Mileage	1/8/25	1	
DI	DI		5981-KATTERHAGEN/DALE	01/2026	905721	01/12/2026	333	19.60	Mileage	11/20/25	1	
DI	DI		5981-KATTERHAGEN/DALE	01/2026	905721	01/12/2026	333	20.30	Mileage	1/8/25	1	
DI	DI		23002-WENDEL/WAYNE	01/2026	245808	01/12/2026	333	27.55	Mileage	1/8/25	1	
DI	DI		9450-WILLIAMSON/THOMAS	01/2026	905729	01/12/2026	333	20.30	Mileage	1/8/26	1	
			79-603-000-0000-6331 - TRAVEL AND EXPENSE (MILEAGE)									Total
								142.85				
			79-603-000-0000-6352 - INSURANCE (P&C)									
DI	DI		4319-MCIT	01/2026	905723	01/12/2026	333	3,857.00	PC Renewal - SWCD Supervisors	21301R	1	



Tran	G/L	Receipt/Warrant	Invoice	Accr								
SC	Type	Vendor	Mont	NUMBER	DATE	Seq	AMOUNT	Description / Service Dates	Number	Cd	Basis	R1R2
		79-603-000-0000-6352 - INSURANCE (P&C)				Total	3,857.00					
		79-603-000-0000-6356 - OTHER MISCELLANEOUS CHARGES										
DI	DI	20022-TODD CO PUBLIC WORKS	01/2026	245883	01/26/2026	333	25.00	ConservationistSign-Replacemen				1
		79-603-000-0000-6356 - OTHER MISCELLANEOUS CHARGES				Total	25.00					
		79-603-000-0000-6365 - EXPENSES - DEPT. PROJECTS										
DI	DI	1129-MN DEPT OF REVENUE	01/2026	1177	01/20/2026	333	1,071.00	Q4 SWCD Sales Tax				1
DI	DI	447-CATHEDRAL PRESS	01/2026	245869	01/26/2026	333	375.00	1,000 Tree Order Forms	M1529954			1
		79-603-000-0000-6365 - EXPENSES - DEPT. PROJECTS				Total	1,446.00					
		PROGRAM 000 - PROGRAM Total					169.81 -					
		PROGRAM 518 - C23-3483 LP COLLABORATIVE FY23 WBIF										
		79-603-518-0000-6810 - PRJ DEV EXP-C23-3483 LP COLLABORATIVI										
DI	DI	20400-THE LAMAR COMPANIES	01/2026	245802	01/12/2026	333	300.00	Drinking Water Billboard	117803121			1
		79-603-518-0000-6810 - PRJ DEV EXP-C23-3483 LP				Total	300.00					
		PROGRAM 518 - C23-3483 LP COLLABORATIVE FY23 WBIF				Total	300.00					
		PROGRAM 523 - C22-7830 RED EYE 1W1P										
		79-603-523-0000-5801 - MISC REV-C22-7830 RED EYE 1W1P										
RE	RE	Todd County Soil & Water	01/2026	149521	01/28/2026	222	47,124.83 -	2025 Expense Projects Wage Rei	E Otter Tail SWCD			1
		79-603-523-0000-5801 - MISC REV-C22-7830 RED EYE 1W1P				Total	47,124.83 -					
		PROGRAM 523 - C22-7830 RED EYE 1W1P				Total	47,124.83 -					
		PROGRAM 526 - C24-0198 MISS-BRAINERD CWMP IMPLEMENTATI										
		79-603-526-0000-6807 - COST SHARE EXP:MISS-BRAINERD CWMP IM										
DI	DI	9163-BAUM/RICK AND JULIE	01/2026	245767	01/12/2026	333	3,187.50	Cost Share - Nutrient Mgmnt				1
		79-603-526-0000-6807 - COST SHARE EXP:MISS-BRAINERD CWMP				Total	3,187.50					
		PROGRAM 526 - C24-0198 MISS-BRAINERD CWMP IMPLEMENTATI				Total	3,187.50					
		PROGRAM 537 - C24-0088 SAUK RIVER WATERSHED WBIF										
		79-603-537-0000-5801 - REVENUE-C24-0088 SAUK RIV WATERSHED										
RE	RE	Todd County Soil & Water	01/2026	149289	01/07/2026	222	3,419.31 -	2025 Q#3 Reimb for WCTSA - Ste				1
		79-603-537-0000-5801 - REVENUE-C24-0088 SAUK RIV				Total	3,419.31 -					
		PROGRAM 537 - C24-0088 SAUK RIVER WATERSHED WBIF				Total	3,419.31 -					



SC	Tran Type	Vendor	G/L Mont	Receipt/Warrant NUMBER DATE	Seq	AMOUNT	Description / Service Dates	Invoice Number	Accr Cd	Basis	R1R2	
	PROGRAM 541 - C25-0169 TIER ONE: BIG SWAN LAKE PHOS RE											
	79-603-541-0000-6810 - PRJ DEV EXP-C25-0169 T1:BIG SWAN PHOS											
DI	DI	14098-BIG SWAN LAKE IMPROVEMENT ASSOCIATION	01/2026	245769	01/12/2026	333	1,350.00	Proj Development Payment	Invoice #4			1
		79-603-541-0000-6810 - PRJ DEV EXP-C25-0169 T1:BIG SWAN				Total	1,350.00					
		PROGRAM 541 - C25-0169 TIER ONE: BIG SWAN LAKE PHOS RE				Total	1,350.00					
	PROGRAM 544 - P26-0150 2026 BUFFER LAW											
	79-603-544-0000-5301 - MN GRANT-P26-0150 BUFFER LAW											
RE	RE	MN State - MMB	01/2026	149576	01/30/2026	222	20,000.00 -	Buffer Law				1
		79-603-544-0000-5301 - MN GRANT-P26-0150 BUFFER LAW				Total	20,000.00 -					
		PROGRAM 544 - P26-0150 2026 BUFFER LAW				Total	20,000.00 -					
	PROGRAM 551 - FEEDLOT											
	79-603-551-0000-6845 - PROGRAM EXPENSE (FEEDLOT)											
DI	DI	8348-MACFO	01/2026	245848	01/20/2026	333	200.00	MACFO Conference 2026 - Pratt				1
DI	DI	8348-MACFO	01/2026	245848	01/20/2026	333	200.00	MACFO Conference 2026 - Anton				1
DI	DI	8348-MACFO	01/2026	245848	01/20/2026	333	200.00	MACFO Conference 2026 - Moore				1
DI	DI	8348-MACFO	01/2026	245848	01/20/2026	333	150.00	MACFO Dues 2026 - Pratt				1
DI	DI	8348-MACFO	01/2026	245848	01/20/2026	333	150.00	MACFO Dues 2026 - Anton				1
DI	DI	8348-MACFO	01/2026	245848	01/20/2026	333	150.00	MACFO Dues 2026 - Moore				1
		79-603-551-0000-6845 - PROGRAM EXPENSE (FEEDLOT)				Total	1,050.00					
		PROGRAM 551 - FEEDLOT				Total	1,050.00					
	PROGRAM 559 - SOIL HEALTH PRACTITIONER PSTN C24-0174											
	79-603-559-0000-6806 - ADMIN EXP-SOIL HEALTH PRACTITIONER											
DI	DI	20066-UNIVERSITY OF MINNESOTA	01/2026	245884	01/26/2026	333	10.00	Field Day Event-Cow/CalfScheve	Todd SWCD			1
		79-603-559-0000-6806 - ADMIN EXP-SOIL HEALTH PRACTITIONER				Total	10.00					
		PROGRAM 559 - SOIL HEALTH PRACTITIONER PSTN C24-0174				Total	10.00					
	PROGRAM 563 - LOCAL WATER MNG GRANT											
	79-603-563-0000-5001 - PROPERTY TAXES - CURRENT (WATER PLAN											
RE	RE	Todd County Soil & Water	01/2026	149516	01/27/2026	222	140.73 -	Water Plan Levy - Todd County				1



SC	Tran Type	Vendor	G/L Mont	Receipt/Warrant NUMBER DATE	Seq	AMOUNT	Description / Service Dates	Invoice Number	Accr Cd	Basis	R1R2
		79-603-563-0000-5001 - PROPERTY TAXES - CURRENT (WATER			Total	140.73 -					
		79-603-563-0000-6845 - PROGRAM EXPENSE (LOCAL WTR MNG)									
DI	DI	9818-AREA II ENVIROTHON	01/2026	245766 01/12/2026	333	150.00	2026 Envirothon Support				1
DI	DI	20022-TODD CO PUBLIC WORKS	01/2026	245883 01/26/2026	333	25.00	Conservationist Sign for 2025				1
		79-603-563-0000-6845 - PROGRAM EXPENSE (LOCAL WTR MNG)			Total	175.00					
		PROGRAM 563 - LOCAL WATER MNG GRANT			Total	34.27					
		PROGRAM 593 - WCTSA-REG NUTRIENT MGMT SPECIALIST									
		79-603-593-0000-5801 - MISC REV-WCTSA-REG NUTR MGMT SPECIA									
RE	RE	Todd County Soil & Water	01/2026	149521 01/28/2026	222	5,065.70 -	2025 Q#4 Nutrient Mgmt	West Central Tech			1
		79-603-593-0000-5801 - MISC REV-WCTSA-REG NUTR MGMT			Total	5,065.70 -					
		PROGRAM 593 - WCTSA-REG NUTRIENT MGMT SPECIALIST			Total	5,065.70 -					
		PROGRAM 599 - SAUK RIVER 1W1P									
		79-603-599-0000-5801 - REVENUE-SAUK RIVER 1W1P									
RE	RE	Todd County Soil & Water	01/2026	149289 01/07/2026	222	772.65 -	2025 Q#3 Reimb for WCTSA - Ste				1
		79-603-599-0000-5801 - REVENUE-SAUK RIVER 1W1P			Total	772.65 -					
		PROGRAM 599 - SAUK RIVER 1W1P			Total	772.65 -					
		DEPT 603 - S&W (FEEDLOT-CO MATCH)			Total	70,620.53 -					
		Fund 79 - TODD SOIL & WATER AGENCY FUND			Total	70,620.53 -					
		95 Transactions			22 Accounts	Final Total	70,620.53 -				

**TODD SOIL & WATER CONSERVATION DISTRICT
SWCD TREASURER'S MONTHLY REPORT
PROGRAM SUMMARY**

PROGRAM	CASH			ADJUSTMENTS	CASH
	BALANCE	RECEIPTS	DISBURSEMENTS		BALANCE
	2/1/2026				2/28/2026
District Savings Account	\$ 281,174.22				\$ 281,174.22
Change Fund	\$ 20.00				\$ 20.00
General/Misc. Revenue/MCIT	\$ 2,756.59	\$ 625.00			\$ 3,381.59
Tree Program	\$ 31,022.14	\$ 6,709.45			\$ 37,731.59
Todd County Allocation	\$ -				\$ -
District Operations	\$ (12,665.43)				\$ (12,665.43)
MPCA Feedlot Program/County Program - FY25	\$ 46,504.59				\$ 46,504.59
MPCA Feedlot Program/County Program - FY26		\$ 86,090.60			\$ 86,090.60
County Appropriation for Feedlot Program	\$ 43,910.02				\$ 43,910.02
Feedlot Performance funds	\$ 12,368.14				\$ 12,368.14
NRBG Water Plan Funds/County Program - FY26	\$ 14,676.00				\$ 14,676.00
Water Plan Levy	\$ 1,215.62				\$ 1,215.62
NRBG Wetland Program Funds/County Program - FY26	\$ 21,641.00				\$ 21,641.00
County Appropriation for Wetland Program	\$ -				\$ -
Todd County AIS Program/County Program	\$ 74,464.91		\$ 350.06		\$ 74,114.85
Todd County Riparian AID Education	\$ 17,100.00		\$ 2,000.00		\$ 15,100.00
Todd County Riparian AID Cost Share Program - 2024	\$ 23,281.37				\$ 23,281.37
Todd County Riparian AID Cost Share Program - 2025	\$ 21,861.85				\$ 21,861.85
Todd County Riparian AID Cost Share Program - 2026	\$ 65,789.00				\$ 65,789.00
MN State Grant	\$ 4,347.22		\$ 2,374.50		\$ 1,972.72
Ob Well Program	\$ (3,900.00)				\$ (3,900.00)
C24-0174 Soil Health Practitioner Grant / Staffing	\$ 198,022.73				\$ 198,022.73
2025 MN Grant SWCD AID	\$ 45,709.99		\$ 6,723.73		\$ 38,986.26
2026 MN Grant SWCD AID	\$ 137,696.12				\$ 137,696.12
FY2026 Buffer Implementation	\$ 20,000.00				\$ 20,000.00
FY2026 / 2027 Conservation Contracts	\$ 38,768.00				\$ 38,768.00
FY2026 / 2027 Conservation Delivery	\$ 40,108.00				\$ 40,108.00
P25-0558 MN Soil Health Delivery Grant C/S	\$ 9,816.33				\$ 9,816.33
P25-0558 MN Soil Health Delivery Grant Project Development	\$ (2,392.57)				\$ (2,392.57)
P25-0558 MN Soil Health Delivery Grant Technical Assistance	\$ (1,943.31)				\$ (1,943.31)
P26-0058 2026 RCPP Soil Health Practices Technical Assistance	\$ 25,891.88				\$ 25,891.88
P26-0058 2026 RCPP Soil Health Practices Cost Share	\$ 150,000.00				\$ 150,000.00
C23-3483 Long Prairie Collaborative WBIF 2023 Admin	\$ 48,635.58		\$ 4,733.96		\$ 43,901.62
C23-3483 Long Prairie Collaborative WBIF 2023 PD	\$ 55,533.87		\$ 300.00		\$ 55,233.87
C23-3483 Long Prairie Collaborative WBIF 2023 TA	\$ (12,066.22)		\$ 1,987.78		\$ (14,054.00)
C23-3483 Long Prairie Collaborative WBIF 2023 CS	\$ (99,510.80)		\$ 50,696.40		\$ (150,207.20)
P25-0471 2025 - Long Prairie Watershed CRP Incentive Grant	\$ 25,470.00		\$ 25,470.00		\$ -
C25-0196 Long Prairie Collaborative WBIF 2025 Admin	\$ 79,533.94		\$ 913.16		\$ 78,620.78
C25-0196 Long Prairie Collaborative WBIF 2025 PD	\$ 105,908.41				\$ 105,908.41
C25-0196 Long Prairie Collaborative WBIF 2025 TA	\$ 113,693.60		\$ 18,345.78		\$ 95,347.82
C25-0196 Long Prairie Collaborative WBIF 2025 CS	\$ 86,255.14		\$ 32,385.10		\$ 53,870.04
C25-0169 Big Swan Phosphorus Grant Tier 1	\$ 51,777.11				\$ 51,777.11
Red Eye One Watershed, One Plan Reimbursement - Grant #2	\$ -	\$ 261.51			\$ 261.51
C25-0118 Red Eye One Watershed, One Plan Reimbursement - Grant #3	\$ (4,643.31)				\$ (4,643.31)
Sauk River One Watershed, One Plan Technical Reimbursement Grant #1	\$ -				\$ -
Sauk River One Watershed, One Plan CS Reimbursement Grant #1	\$ -				\$ -
C24-0088 Sauk River One Watershed, One Plan - Reimbursement Grant #2	\$ (55,093.99)				\$ (55,093.99)
P25-0821 CRP Sauk River Watershed Incentive Grant	\$ (21,148.00)				\$ (21,148.00)
C24-0198 Mississippi River One Watershed - Implementation	\$ (49,998.13)	\$ 7,997.59	\$ 624.43		\$ (42,624.97)
C25-0310 Crow Wing WBIF Phase #1	\$ (4,670.95)				\$ (4,670.95)
FY2023 Long Prairie Watershed LCCMR Grant	\$ (13,974.72)				\$ (13,974.72)
FY2024 Get Out More Hewitt Dam Removal Project			\$ 158.64		\$ (158.64)
MN Ag Water Program/Partnership- Reimbursement	\$ (3,106.35)	\$ 3,106.35			\$ -
WCTSA Nutrient Management/Partnership Reimbursement	\$ 674.40				\$ 674.40
TOTAL	\$ 1,610,513.99	\$ 104,790.50	\$ 147,063.54	\$ -	\$ 1,568,240.95

Prepared by: Sarah Katterhagen, Program Coordinator

Date

Reviewed by: Deja Anton, SWCD District Manager

Date

Larry Bebus, District Treasurer

Date

**** Todd County ****



ACCOUNT ACTIVITY REPORT

Page Break Option: 1 1 - Page Break by FUND
2 - Page Break by DEPT Print Service Dates: No

Sort: 1st: 2nd 3rd 4th 5th 6th
G D T N M W
F - G/L Object Within Fund Number
G - G/L Account Number
P - G/L Object Within Dept Number
D - Transaction Date
M - G/L Month & Year
N - Vendor/Payer Name
T - Type Of Transaction
W - Receipt/Warrant Number

Range Subtotals: 1 1 - No Subtotals
2 - Detail and Subtotals by OBJECT Range
3 - Subtotals only by OBJECT Range
4 - Account Totals and Subtotals by OBJECT Range
5 - Account Totals and Subtotals by PROGRAM Range

Report Basis: 1 Cash Only This Basis?: No

Print YTD Totals: No Type of Report: 1 1 - DETAIL
2 - ABBREVIATED

Specific Dates: From: 02/01/2026 Thru: 02/28/2026

Comment:
FUND Range From 79 Thru 79
DEPT Range From 603 Thru 603



Tran	G/L	Receipt/Warrant	Invoice	Accr								
SC	Type	Vendor	Mont	NUMBER	DATE	Seq	AMOUNT	Description / Service Dates	Number	Cd	Basis	R1R2
DEPT 603 - S&W (FEEDLOT-CO MATCH)												
PROGRAM 000 - PROGRAM												
79-603-000-0000-5530 - FEE - DEPT PRJ SALES												
RE	RE	Todd County Soil & Water	02/2026	149618	02/05/2026	222	214.75-	100 Trees - Linda Frederick				1
RE	RE	Todd County Soil & Water	02/2026	149676	02/10/2026	222	419.30-	175 Trees, 10 Vented - Nick Sa				1
RE	RE	Todd County Soil & Water	02/2026	149676	02/10/2026	222	107.38-	50 Trees - Brian Ramey				1
RE	RE	Todd County Soil & Water	02/2026	149676	02/10/2026	222	107.37-	50 Trees - Lois Lee				1
RE	RE	Todd County Soil & Water	02/2026	149676	02/10/2026	222	1,187.84-	300 Trees, 125 Vented - Dan Te				1
RE	RE	Todd County Soil & Water	02/2026	149676	02/10/2026	222	53.69-	25 Trees - Lynn Hommerding				1
RE	RE	Todd County Soil & Water	02/2026	149676	02/10/2026	222	268.44-	125 Trees - Lyle Katterhagen				1
RE	RE	Todd County Soil & Water	02/2026	149676	02/10/2026	222	161.06-	2 Kits - Rick Jones				1
RE	RE	Todd County Soil & Water	02/2026	149676	02/10/2026	222	107.38-	50 Trees - Pete Bosl				1
RE	RE	Todd County Soil & Water	02/2026	149676	02/10/2026	222	107.36-	50 Trees - Don Kassube				1
RE	RE	Todd County Soil & Water	02/2026	149676	02/10/2026	222	53.69-	25 Trees - Richard Bass				1
RE	RE	Todd County Soil & Water	02/2026	149676	02/10/2026	222	53.69-	25 Trees - Carl Peterson				1
RE	RE	Todd County Soil & Water	02/2026	149676	02/10/2026	222	53.69-	25 Trees - James Gotta				1
RE	RE	Todd County Soil & Water	02/2026	149676	02/10/2026	222	429.50-	200 Trees - Tony Isvik				1
RE	RE	Todd County Soil & Water	02/2026	149753	02/13/2026	222	323.47-	100 Trees, 25 Vented - Jordan				1
RE	RE	Todd County Soil & Water	02/2026	149753	02/13/2026	222	429.50-	200 Trees - David Brill				1
RE	RE	Todd County Soil & Water	02/2026	149753	02/13/2026	222	161.06-	75 Trees - Terry Boone				1
RE	RE	Todd County Soil & Water	02/2026	149753	02/13/2026	222	53.69-	25 Trees - Anne Villalobos				1
RE	RE	Todd County Soil & Water	02/2026	149753	02/13/2026	222	53.69-	25 Trees - Doug & Sharon Pesta				1
RE	RE	Todd County Soil & Water	02/2026	149772	02/18/2026	222	107.38-	50 Tree - Robert Cuchna				1
RE	RE	Todd County Soil & Water	02/2026	149772	02/18/2026	222	214.75-	100 Trees - Scott Duchene				1
RE	RE	Todd County Soil & Water	02/2026	149772	02/18/2026	222	268.44-	125 Trees - Theresa Zylla				1
RE	RE	TCSW	02/2026	149822	02/20/2026	222	161.06-	75 Trees			Hannah Israel	1
RE	RE	TCSW	02/2026	149822	02/20/2026	222	107.38-	50 Trees			Chad Longbella	1
RE	RE	TCSW	02/2026	149822	02/20/2026	222	214.75-	25 Trees and 2 kits			Cassandra Mead	1
RE	RE	TCSW	02/2026	149822	02/20/2026	222	429.50-	200 Trees			Ryan Chock	1
RE	RE	Todd County Soil & Water	02/2026	149961	02/27/2026	222	53.69-	Trees- 25			Becky Meis	1



Tran	G/L	Receipt/Warrant	Invoice	Accr								
SC	Type	Vendor	Mont	NUMBER	DATE	Seq	AMOUNT	Description / Service Dates	Number	Cd	Basis	R1R2
79-603-000-0000-5530 - FEE - DEPT PRJ SALES												
RE	RE	Todd County Soil & Water	02/2026	149961	02/27/2026	222	53.69-	25 Trees	Sara Cole			1
RE	RE	Todd County Soil & Water	02/2026	149961	02/27/2026	222	108.00-	50 Trees	Lester Sand			1
RE	RE	Todd County Soil & Water	02/2026	149961	02/27/2026	222	161.06-	2 Kits	Hagen Gamradt			1
RE	RE	Todd County Soil & Water	02/2026	149961	02/27/2026	222	53.69-	25 Trees	Sauk River			1
RE	RE	Todd County Soil & Water	02/2026	149961	02/27/2026	222	322.13-	150 Trees	Retriever			1
RE	RE	Todd County Soil & Water	02/2026	149961	02/27/2026	222	107.38-	50 Trees	Thomas Henrich			1
									Corey Georges			1
79-603-000-0000-5530 - FEE - DEPT PRJ SALES						Total	6,709.45-					
79-603-000-0000-5801 - MISCELLANEOUS REVENUE												
RE	RE	Todd County Soil & Water	02/2026	149753	02/13/2026	222	100.00-	Feedlot Sponsorship - MN Natio				1
RE	RE	Todd County Soil & Water	02/2026	149772	02/18/2026	222	25.00-	Replacement sign - Dale Katter				1
RE	RE	Todd County Soil & Water	02/2026	149961	02/27/2026	222	500.00-	Feedlot Meeting	Todd County Corn			1
									& S			
79-603-000-0000-5801 - MISCELLANEOUS REVENUE						Total	625.00-					
79-603-000-0000-6845 - PROGRAM/PROJECT EXP(GENERAL/AGENCY												
DI	DI	17746-LARSON ABSTRACT COMPANY	02/2026	246017	02/23/2026	333	46.00	Recording Fee - Easement	014684			1
DI	DI	17746-LARSON ABSTRACT COMPANY	02/2026	246017	02/23/2026	333	46.00	Recording Fee - NOFR	014684			1
DI	DI	17746-LARSON ABSTRACT COMPANY	02/2026	246017	02/23/2026	333	1,892.50	Owners Insurance Premium	014684			1
DI	DI	17746-LARSON ABSTRACT COMPANY	02/2026	246017	02/23/2026	333	390.00	Exam Fee	014684			1
79-603-000-0000-6845 - PROGRAM/PROJECT EXP						Total	2,374.50					
PROGRAM 000 -						PROGRAM Total	4,959.95-					
PROGRAM 518 - C23-3483 LP COLLABORATIVE FY23 WBIF												
79-603-518-0000-6806 - ADMIN EXP-C23-3483 LP COLLABORATIVE												
DI	DI	11431-DOUGLAS SWCD	02/2026	245891	02/02/2026	333	4,733.96	Q4 2025 - Douglas SWCD Admin	12-31-260			1
79-603-518-0000-6806 - ADMIN EXP-C23-3483 LP						Total	4,733.96					
79-603-518-0000-6807 - COST SHARE EXP-C23-3483 LP COLLABORATIVE												
DI	DI	11431-DOUGLAS SWCD	02/2026	245891	02/02/2026	333	1,252.50	2025 Well Sealing Project	12-31-260			1
DI	DI	11431-DOUGLAS SWCD	02/2026	245891	02/02/2026	333	925.00	2025 Well Sealing Project	12-31-260			1
DI	DI	15527-LAMUSGA/JASON	02/2026	246016	02/23/2026	333	48,518.90	Cost Share Payment				1
79-603-518-0000-6807 - COST SHARE EXP-C23-3483 LP						Total	50,696.40					
79-603-518-0000-6810 - PRJ DEV EXP-C23-3483 LP COLLABORATIVE												



Tran	G/L	Receipt/Warrant	Invoice	Accr								
SC	Type	Vendor	Mont	NUMBER	DATE	Seq	AMOUNT	Description / Service Dates	Number	Cd	Basis	R1R2
		79-603-518-0000-6810 - PRJ DEV EXP-C23-3483 LP COLLABORATIVI										
DI	DI	20400-THE LAMAR COMPANIES	02/2026	245947	02/09/2026	333	300.00	Drinking Water Billboard	117876902			1
		79-603-518-0000-6810 - PRJ DEV EXP-C23-3483 LP				Total	300.00					
		79-603-518-0000-6849 - TECH ASSIST EXP-C23-3483 LP COLLABOR,										
DI	DI	11167-WEST CENTRAL TECH SERVICE AREA	02/2026	245907	02/02/2026	333	1,987.78	Tech Assist WCTSA	26-14			1
		79-603-518-0000-6849 - TECH ASSIST EXP-C23-3483 LP				Total	1,987.78					
		PROGRAM 518 - C23-3483 LP				Total	57,718.14					
		COLLABORATIVE FY23 WBIF										
		PROGRAM 519 - SWCD AID										
		79-603-519-0000-6849 - TECH ASSIST EXP-SWCD AID										
DI	DI	11167-WEST CENTRAL TECH SERVICE AREA	02/2026	245907	02/02/2026	333	6,723.73	Tech Assist WCTSA	26-14			1
		79-603-519-0000-6849 - TECH ASSIST EXP-SWCD AID				Total	6,723.73					
		PROGRAM 519 - SWCD AID				Total	6,723.73					
		PROGRAM 525 - 2025-CRP STATE INCENTIVES PROGRAM										
		79-603-525-0000-6807 - COST SHARE EXP-2025-CRP STATE INCENT										
DI	DI	11431-DOUGLAS SWCD	02/2026	245924	02/09/2026	333	15,000.00	CRP Incentive Payment 2025	2-2026-1			1
DI	DI	11431-DOUGLAS SWCD	02/2026	245924	02/09/2026	333	10,470.00	CRP Incentive Payment 2025	2-2026-1			1
		79-603-525-0000-6807 - COST SHARE EXP-2025-CRP STATE				Total	25,470.00					
		PROGRAM 525 - 2025-CRP STATE INCENTIVES PROGRAM				Total	25,470.00					
		PROGRAM 526 - C24-0198 MISS-BRAINERD CWMP IMPLEMENTATI										
		79-603-526-0000-5801 - MISC REVENUE: MISS-BRAINERD CWMP IMPLI										
RE	RE	Todd County Soil & Water	02/2026	149676	02/10/2026	222	4,810.09-	2025 Staff Time - Aitkin Swcd				1
RE	RE	Todd County Soil & Water	02/2026	149961	02/27/2026	222	3,187.50-	Reimbursement	Aitkin SWCD			1
		79-603-526-0000-5801 - MISC REVENUE: MISS-BRAINERD CWMP				Total	7,997.59-					
		79-603-526-0000-6849 - TECHNICAL ASSIST.EXP:MISS-BRAINERD CW										
DI	DI	11167-WEST CENTRAL TECH SERVICE AREA	02/2026	245907	02/02/2026	333	624.43	Tech Assist WCTSA	26-14			1
		79-603-526-0000-6849 - TECHNICAL ASSIST.EXP:MISS-BRAINERD				Total	624.43					
		PROGRAM 526 - C24-0198 MISS-BRAINERD CWMP IMPLEMENTATI				Total	7,373.16-					
		PROGRAM 528 - C25-0196 LONG PRAIRIE COLLABTV FY25 WBIF										



Tran	G/L	Receipt/Warrant	Invoice	Accr								
SC	Type	Vendor	Mont	NUMBER	DATE	Seq	AMOUNT	Description / Service Dates	Number	Cd	Basis	R1R2
		79-603-528-0000-6806 - ADMINISTRATION EXP-C25-0196 LP COLLA										
DI	DI	9900-MORRISON SWCD	02/2026	245937	02/09/2026	333	913.16	Staff Time Q4 Tech Hours	LPWBIF2505			1
		79-603-528-0000-6806 - ADMINISTRATION EXP-C25-0196 LP				Total	913.16					
		79-603-528-0000-6807 - COST SHARE EXP-C25-0196 LP COLLABOR/										
DI	DI	15527-LAMUSGA/JASON	02/2026	246016	02/23/2026	333	32,385.10	Cost Share Payment				1
		79-603-528-0000-6807 - COST SHARE EXP-C25-0196 LP				Total	32,385.10					
		79-603-528-0000-6849 - TECHNICAL ASSIST.EXP-C25-0196 LP COLL										
DI	DI	11431-DOUGLAS SWCD	02/2026	245891	02/02/2026	333	9,752.24	Q4 2025 - Douglas SWCD Tech	12-31-260			1
DI	DI	11431-DOUGLAS SWCD	02/2026	245891	02/02/2026	333	6,561.54	2025 WCTSA Staff Time	12-31-260			1
DI	DI	9900-MORRISON SWCD	02/2026	245937	02/09/2026	333	2,032.00	Staff Time Q4 Admin Hours	LPWBIF2505			1
		79-603-528-0000-6849 - TECHNICAL ASSIST.EXP-C25-0196 LP				Total	18,345.78					
		PROGRAM 528 - C25-0196 LONG PRAIRIE COLLABTV FY25 WBIF				Total	51,644.04					
		PROGRAM 538 - C25-0118 RED EYE WATERSHED IMPLEM GRANT										
		79-603-538-0000-5801 - REVENUE-C25-0118 RED EYE WTRSD IMP C										
RE	RE	Todd County Soil & Water	02/2026	149961	02/27/2026	222	261.51 -	Reimbursement	East Otter Tail SWCD			1
		79-603-538-0000-5801 - REVENUE-C25-0118 RED EYE WTRSD				Total	261.51 -					
		PROGRAM 538 - C25-0118 RED EYE WATERSHED IMPLEM GRANT				Total	261.51 -					
		PROGRAM 540 - FY24 GET OUT MORE HEWITT DAM REMOVAL										
		79-603-540-0000-6849 - TECHNICAL ASSIST.EXP-FY24 GET OUT MOF										
DI	DI	11167-WEST CENTRAL TECH SERVICE AREA	02/2026	245907	02/02/2026	333	158.64	Tech Assist WCTSA	26-14			1
		79-603-540-0000-6849 - TECHNICAL ASSIST.EXP-FY24 GET OUT				Total	158.64					
		PROGRAM 540 - FY24 GET OUT MORE HEWITT DAM REMOVAL				Total	158.64					
		PROGRAM 551 - FEEDLOT										
		79-603-551-0000-5285 - COUNTY SOURCED REV (FEEDLOT FUNDING										
RE	RE	TCSW	02/2026	149822	02/20/2026	222	86,090.60 -	Feedlot Program	Todd County			1
		79-603-551-0000-5285 - COUNTY SOURCED REV (FEEDLOT				Total	86,090.60 -					
		PROGRAM 551 - FEEDLOT				Total	86,090.60 -					
		PROGRAM 583 - COUNTY RIPARIAN AID										



SC	Tran Type	Vendor	G/L Mont	Receipt/Warrant NUMBER DATE	Seq	AMOUNT	Description / Service Dates	Invoice Number	Accr Cd	Basis	R1R2
		79-603-583-0000-6845 - PROJ/PROG EXP-COUNTY RIPARIAN AID									
DI	DI	16134-MISSISSIPPI HEADWATERS BOARD	02/2026	245983 02/17/2026	333	2,000.00	AIS Marketing 2026	Todd County			1
		79-603-583-0000-6845 - PROJ/PROG EXP-COUNTY RIPARIAN AID Total									
							2,000.00				
		PROGRAM 583 - COUNTY RIPARIAN AID				Total	2,000.00				
		PROGRAM 586 - AIS PROGRAM									
		79-603-586-0000-6845 - PROGRAM/PROJECT EXP-AIS PROGRAM									
DI	DI	9594-US BANK	02/2026	1226 02/25/2026	333	76.58	Coborns - Mtg Supplies AIS Mtg				1
DI	DI	9594-US BANK	02/2026	1226 02/25/2026	333	273.48	Coborns - Mtg Supplies AIS Mtg				1
		79-603-586-0000-6845 - PROGRAM/PROJECT EXP-AIS PROGRAM Total									
							350.06				
		PROGRAM 586 - AIS PROGRAM				Total	350.06				
		PROGRAM 592 - MAWQCP-AG WATER PROGRAM									
		79-603-592-0000-5801 - MISC REV-MAWQCP-AG WATER PROGRAM									
RE	RE	TCSW	02/2026	149822 02/20/2026	222	3,106.35 -	2025 QRT #4 Staff Wages	Stearns County			1
		79-603-592-0000-5801 - MISC REV-MAWQCP-AG WATER Total									
							3,106.35 -				
		PROGRAM 592 - MAWQCP-AG WATER				Total	3,106.35 -				
		PROGRAM									
		DEPT 603 - S&W (FEEDLOT-CO MATCH)				Total	42,273.04				
		Fund 79 - TODD SOIL & WATER AGENCY FUND				Total	42,273.04				
		64 Transactions	20 Accounts	Final Total		42,273.04					



Selling Trees/Cost Share



Padua Prairie Partnership



Conservation Easements



THUNDER (LONG PRAIRIE - GREY EAGLE)

Friday, March 27th

CAREER PATH AHEAD

LONG PRAIRIE - GREY EAGLE SECONDARY SCHOOL

CAREER FAIR



Wetland Applications



STAPLES MOTLEY CARDINALS



Rick Baum JR Cover Crop

Location Information		Project Information	
Parcel Number	04-0021900, 04-0027400, 04-0034800	Project Type	Ecological
Township Name	Bruce	Practice Types	Cover Crop
TWP, Range, Section	T129N, R32W, Sec 27, 32, 34	Project Codes	340
Major Watershed	Mississippi-Brainerd	Field Technicians	Alyssa Scheve
Minor Watershed	10135 Swan River	Forester:	enter name
Project Coordinates:	45.953541, -94.697526		

POA Targeted Initiative: Land Productivity through Soil Health Conservation

Resource Concern and Project Purpose Description

Little Swan River, Type 1, 3, 5, 6 wetlands, soil erosion and soil health. This project consists of planting an oat cover crop over 24.5 acres after silage harvest. Producer intends to take corn silage off, disk, plant and roll to establish an *oat/radish* cover crop. Producer does not want a cover crop to over-winter. The purpose of this project is to increase soil health, and having a living cover crop after silage harvest, a time where the soil will be unprotected with no living roots, will provide that.

Alternative Conservation or Management Practice(s) Considered

Alternative solutions were weighed regarding cost analysis, practicality of install, material availability, longevity, maintenance requirements, and effective resolution of cause.

Funding Information:

Contractor	Low Estimate: \$2,036.73	% C/S 75%	Encumber Amount \$1,527.54
Final Invoice (s)	TBD	Cost Share Payment Amount	TBD
Funding Source	FY24 Mississippi Brainerd WBIF Landowner Amount	TBD	TBD

Todd SWCD Mission Statement: Conservation, Protection, and Enhancement of Todd County's Natural Resources

[Rick Baum JR, Cover Crop Encumbering, submitted by Alyssa Scheve, 3/2/2026](#)

	Before	After	Reduction Notes
COD	NA	NA	MCPA prediction calculator shows reductions in soil nutrients loss due to establishing the multi-specie cover crop.
Nitrogen	1.44 lbs/ac	# or NA.	
Fecal Coliform	NA	# or NA.	
BOD	NA	# or NA	
Sediment/TSS	.02 tons/ac	#or NA	
Phosphorus	.11 lbs/ac	# or NA.	



Todd SWCD Mission Statement: Conservation, Protection, and Enhancement of Todd County's Natural Resources

Rick Baum JR, Cover Crop Encumbrance, submitted by Alyssa Scheve, 3/2/2026



Tree Establishment - Alstead- Encumbering

Location Information		Project Information	
Parcel Number	07-0024600	Project Type	Ecological
Township Name	Eagle Valley	Practice Types	Tree Establishment; Riparian Forest Buff
TWP, Range, Section	131, 34, 21	Project Codes	612; 391
Major Watershed	Long Prairie	Field Technicians	Kasen Christiansen & Alyssa Scheve
Minor Watershed	14046 Eagle Creek		
Project Coordinates:	-94.960, 46.142		

POA Targeted Initiative: Water Quality, Safety & Protection

Resource Concern and Project Purpose Description

Located a half mile north of Clarissa, the Alstead project lies within a riparian drainage area to Eagle Creek with a history of impairment. The primary goal is to reduce transport of sediment, pathogens, chemicals, pesticides, and nutrients to surface water coming from conventional field practices both east and north of this buffer area. An acre of land would be used for tree planting to restore the diversity, structure, and composition of riparian plant communities while simultaneously benefiting water quality and wildlife.

The planting will be 11 rows (3,700 feet) consisting of Hazelnut, Ninebark, Gray Dogwood, Red Dogwood, and Red Maple. Trees will provide benefits for water quality, erosion, and wildlife. A minimum of 300 trees is required for a 1-acre planting. The landowner will be planting 530 trees in total.

Alternative Conservation or Management Practice(s) Considered

Alternative solutions were weighed regarding cost analysis, practicality of install, material availability, longevity, maintenance requirements, and effective resolution of cause.

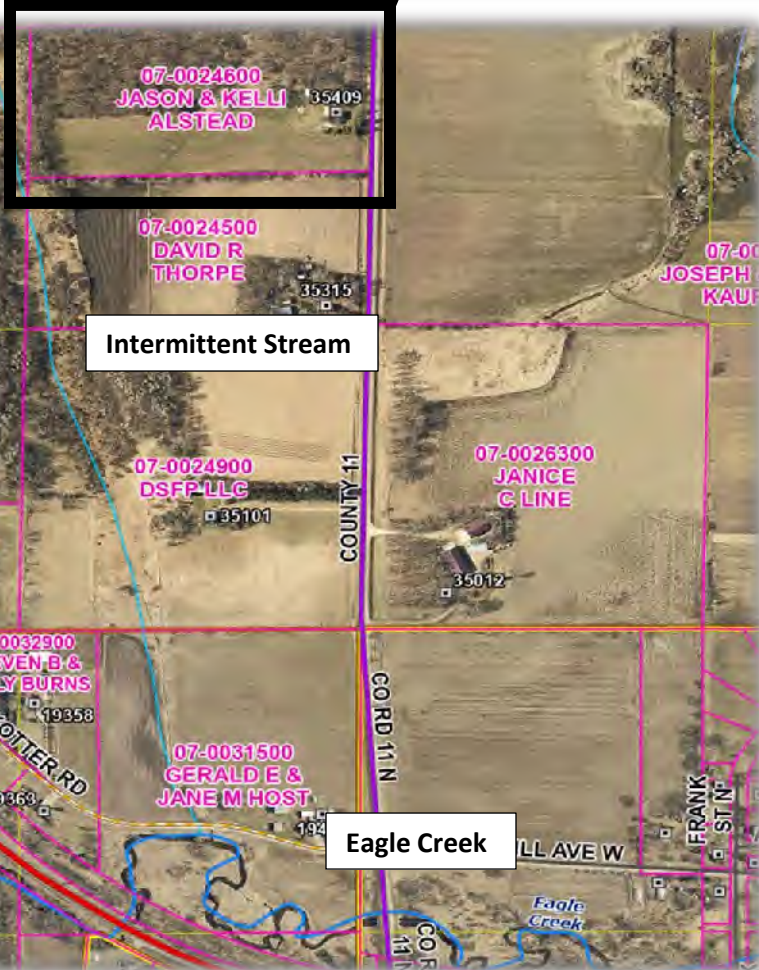
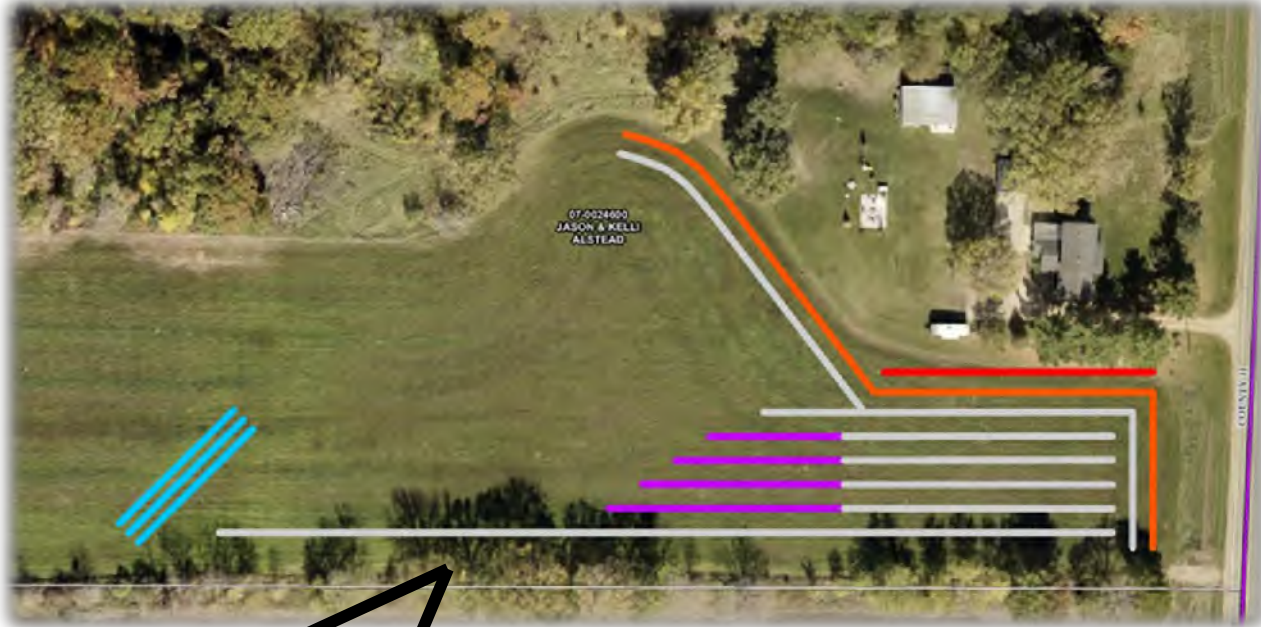
Funding Information:

Contractor	Low Estimate:	% C/S	Encumber Amount
Landowner In-kind	\$1884.56	75%	\$1413.42
Final Invoice (s)	TBD	Cost Share Payment Amount	TBD
Funding Source	FY2026 Riparian Landowner Amount	TBD	TBD

	After	Reduction Notes
COD	NA	While the reduction figures are modest, the planting effectively mitigates sediment erosion and prevents runoff from entering the urban stormwater system. Nitrogen came from BEET. TSS/ P from FERN
Nitrogen	2 (lbs/yr)	
Sediment/TSS	0.13 (tons/yr)	
Phosphorus	1.8 (tons/yr)	

Todd SWCD Mission Statement: Conservation, Protection, and Enhancement of Todd County's Natural Resources

AlsteadTree Establishment, Encumbering, Submitted by Kasen & Alyssa, Board Meeting Date 3/12/26



Row No.	Row Length	Species
1	665 Feet	Gray Dogwood (300 Trees)
2	200 Feet	Gray Dogwood
*	175 Feet	Hazelnut (75 Trees)
3	200 Feet	Gray Dogwood
*	150 Feet	Hazelnut
4	200 Feet	Gray Dogwood
*	125 Feet	Hazelnut
5	200 Feet	Gray Dogwood
*	100 Feet	Hazelnut
6	650 Feet	Gray Dogwood
7	600 Feet	Ninebark (100 Trees)
6	75 Feet	Red Maple (5 Trees)
9-11	360 Feet	Redosier (50 Trees)

Todd SWCD Mission Statement: Conservation, Protection, and Enhancement of Todd County's Natural Resources

AlsteadTree Establishment, Encumbering, Submitted by Kasen & Alyssa, Board Meeting Date 3/12/26



Tree Establishment - Hanson- Encumbering

Location Information		Project Information	
Parcel Number	36-0120800	Project Type	Ecological
Township Name	Long Prairie, City	Practice Types	Tree Establishment /Stormwater Runoff
TWP, Range, Section	129, 33, 19	Project Codes	612; 570
Major Watershed	Long Prairie	Field Technicians	Kasen Christiansen & Alyssa Scheve
Project Coordinates:	-94.880, 45.972		

POA Targeted Initiative: Water Quality, Safety & Protection

Resource Concern and Project Purpose Description

Located at the edge of a Long Prairie subdivision, the Hanson project is an urban conservation effort designed to manage stormwater runoff and stabilize sandy soils. The property is situated on a slope that drains toward the city storm drains and FEMA floodplain of the Long Prairie River. Storm drains are located at the corner of 3rd Ave SW and 6th St SW.

The planting will be 7 rows (1,300 feet) consisting of Lilac, Juneberry, American Plum, Hazelnut, Nanking Cherry, Balsam Fir, and White Spruce. The deep roots will anchor the site’s sandy soils, preventing erosion toward the storm drains and river basin, while the foliage will provide food/habitat for wildlife. To ensure successful establishment in an area due to high deer pressure, the Juneberry, Plum, and Hazelnut trees will be protected by tree tubes.

Alternative Conservation or Management Practice(s) Considered

Alternative solutions were weighed regarding cost analysis, practicality of install, material availability, longevity, maintenance requirements, and effective resolution of cause.

Funding Information:

Contractor	Low Estimate:	% C/S	Encumber Amount
Landowner In-kind	\$970.08	75%	\$727.56
Final Invoice (s)	TBD	Cost Share Payment Amount	TBD
Funding Source	FY2026 Riparian Landowner Amount	TBD	TBD

	After	Reduction Notes
COD	NA	While the reduction figures are modest, the planting effectively mitigates sediment erosion and prevents runoff from entering the urban stormwater system.
Nitrogen	0.03 (lbs/yr)	
Fecal Coliform	NA	
BOD	NA	
Sediment/TSS	0.01 (tons/yr)	
Phosphorus	0.02 (tons/yr)	

Todd SWCD Mission Statement: Conservation, Protection, and Enhancement of Todd County’s Natural Resources

[Hanson Tree Establishment, Encumbering, Submitted by Kasen & Alyssa, Board Meeting Date 3/12/26](#)



- 175 Trees**
- 25 Lilac
 - 25 Juneberry
 - 25 American Plum
 - 25 Hazelnut
 - 25 Nanking Cherry
 - 25 Balsam Fir
 - 25 White Spruce



Todd SWCD Mission Statement: Conservation, Protection, and Enhancement of Todd County's Natural Resources

Hanson Tree Establishment, Encumbering, Submitted by Kasen & Alyssa, Board Meeting Date 3/12/26

Kunkel & Allen Shoreland Stabilization

Location Information

Parcel Number 11-0049800 & 11-0049900
 Township Name Grey Eagle
 TWP, Range, Section 127, 32, 3
 Major Watershed Mississippi-Brainerd
 Minor Watershed 10133 – Big Swan Lake
 Project Coordinates: 45.836721, -94.692902

Project Information

Project Type Ecological/Engineered
 Practice Types Streambank & Shoreline Protection, Critical Area Planting
 Project Codes 580, 342
 Field Technicians Josh Votruba
 Engineer: Ross Reiffenberger

POA Targeted Initiative:

Water Quality, Safety & Protection

Resource Concern and Project Purpose Description

Soils and nutrients entering surface water through erosion. Site is steep with erodible sandy soils and is poorly vegetated. This completed project will stabilize soil, resulting in less sediment and nutrients entering Mound Lake which is a high-water quality lake.

Alternative Conservation or Management Practice(s) Considered

Alternative solutions were weighed regarding cost analysis, practicality of install, material availability, longevity, maintenance requirements, and effective resolution of cause.

Funding Information:

Contractor	Low Estimate:	% C/S	Encumber Amount
Lake Country Landscaping	\$29,172.00	75%	\$21,879.00

Final Invoice (s)	TBD	Cost Share Payment Amount	TBD
-------------------	-----	---------------------------	-----

Funding Source	Miss. Brainerd WBIF	\$21,879.00
	Landowner Amount	\$7,293.00

Add notes if needed.

Pollution Reductions

Reduction Notes

Soil	8.94 T/yr	BWSR Stream & Ditch Bank
Sediment	8.94 T/yr	Stabilization Estimator
Phosphorus	7.60 lbs./yr	

Todd SWCD Mission Statement: Conservation, Protection, and Enhancement of Todd County's Natural Resources

Kunkel/Allen Shoreline Stabilization, Encumbering, Submitted by Josh Votruba, 2026.03.12



Approximate project location outlined above.



Engineered Design Plan Above. A combination of rock rip rap and a native shoreland buffer will be installed to stabilize shoreland area resulting in less sediment and nutrients entering Mound Lake as a result of soil erosion.



Todd SWCD Mission Statement: Conservation, Protection, and Enhancement of Todd County's Natural Resources

Kunkel/Allen Shoreline Stabilization, Encumbering, Submitted by Josh Votruba, 2026.03.12



Todd SWCD Mission Statement: Conservation, Protection, and Enhancement of Todd County's Natural Resources

Kunkel/Allen Shoreline Stabilization, Encumbering, Submitted by Josh Votruba, 2026.03.12



Katterhagen Tree Establishment

Location Information

Parcel Number 26-0022400
 Township Name Ward
 TWP, Range, Section 131/33/24
 Major Watershed Long Prairie
 Minor Watershed 14039
 Project Coordinates:
 46.137854, -94.791612

Project Information

Project Type Ecological
 Practice Types Tree Establishment
 Project Codes 612
 Field Technicians Scheve/Christiansen

POA Targeted Initiative: Land Productivity through Soil Health Conservation

Resource Concern and Project Purpose Description

This plan included three rows consisting of white cedar, white spruce, Norway spruce and Black Hills Spruce totaling 630 feet of new tree establishment. With the new trees established, wind erosion and soil erosion will be reduced rather than no protection provided from the elements.

Alternative Conservation or Management Practice(s) Considered

Alternative solutions were weighed regarding cost analysis, practicality of install, material availability, longevity, maintenance requirements, and effective resolution of cause.

Funding Information:

Contractor	Low Estimate:	% C/S	Encumber Amount
	\$938.29	75%	\$703.72

Final Invoice (s)	TBD	Cost Share Payment Amount	TBD
--------------------------	-----	----------------------------------	-----

Funding Source	FY26 Soil Health Delivery	TBD
	Landowner Amount	TBD

Add notes if needed.

	Before	After	Reduction Notes
COD	NA	NA	FERN Calculator indicated levels of load reductions once practice is implemented.
Nitrogen	3.4	.2	
Fecal Coliform	NA	# or NA.	
BOD	NA	# or NA	
Sediment/TSS	.01	0.0	
Phosphorus	.25	.01	

Todd SWCD Mission Statement: Conservation, Protection, and Enhancement of Todd County's Natural Resources

Enter Project Name, Encumbering or Payment, submitted by, Board Meeting Date 2024.10.10.



Todd SWCD Mission Statement: Conservation, Protection, and Enhancement of Todd County's Natural Resources

Enter Project Name, Encumbering or Payment, submitted by, Board Meeting Date 2024.10.10.



W Sobiech FSP

Location Information

Parcel Number 25-00314;-0032;-00326
 Township Name Villard
 TWP, Range, Section 133-32-30
 Major Watershed Long Prairie
 Minor Watershed 14034 Long Prairie R.

Project Information

Project Type Ecological
 Practice Types FSP
 Project Codes 106
 Field Technicians Anton
 Forester: Stanley Musielwicz,
 Wolftree

Project Coordinates:

46.298117 -94.765962

POA Targeted Initiative:

Water Quality, Safety & Protection

Resource Concern and Project Purpose Description

CD 16 is the primary public ditch between Lawrence Lake in Staples and the Long Prairie River. This parcel serves as a cleansing sponge for nutrients. The forests on this 120-ac parcel are critical for water storage and nutrient uptake and the southeastern quarter is actually part of the Long Prairie River FEMA Flood Zone.

Alternative Conservation or Management Practice(s) Considered

Alternative solutions were weighed regarding cost analysis, practicality of install, material availability, longevity, maintenance requirements, and effective resolution of cause.

Funding Information:

Contractor	Low Estimate:	% C/S	Encumber Amount
	\$1500	75%	\$1125

Final Invoice (s)	TBD	Cost Share Payment Amount	TBD
--------------------------	-----	----------------------------------	-----

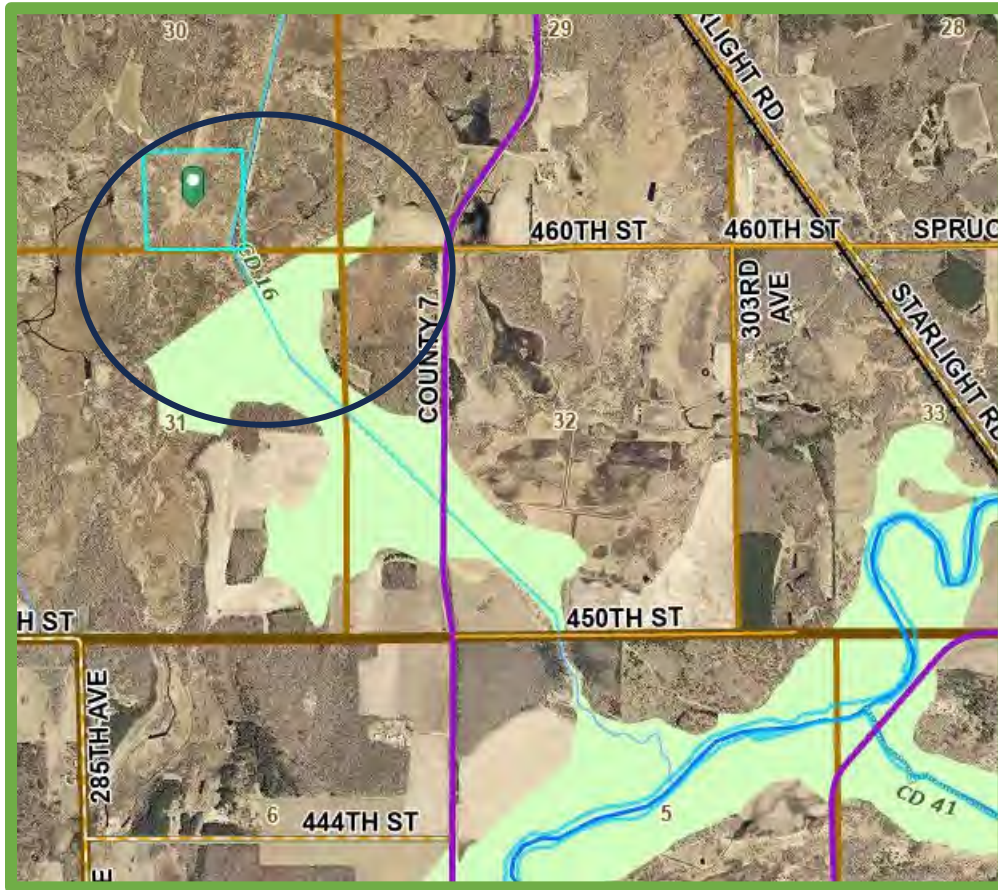
Funding Source	FY23 LCCMR- P23-2945	\$1125
	Landowner Amount	\$375

Add notes if needed.

	After	Reduction Notes
Nitrogen	101.1 lbs	FERN
Sediment/TSS	.09 Tons	
Phosphorus	6.86 lbs	

Todd SWCD Mission Statement: Conservation, Protection, and Enhancement of Todd County's Natural Resources

Enter Project Name, Encumbering or Payment, submitted by, Board Meeting Date 2024.10.10.



Todd SWCD Mission Statement: Conservation, Protection, and Enhancement of Todd County's Natural Resources

Enter Project Name, Encumbering or Payment, submitted by, Board Meeting Date 2024.10.10.



R Sobiech FSP

Location Information

Parcel Number 01-00008;00118;00116;0012
 Township Name Bartlett
 TWP, Range, Section 133-34-12
 Major Watershed Long Prairie
 Minor Watershed 14031 Moran Creek

Project Information

Project Type Ecological
 Practice Types FSP
 Project Codes 106
 Field Technicians Anton
 Forester: Stanley Musielwicz, Wolftree

Project Coordinates:
46.34889 -94.909287

POA Targeted Initiative: Water Quality, Safety & Protection

Resource Concern and Project Purpose Description

This 203-acre parcel borders CD7./Moran Creek. This parcel serves as a cleansing sponge for nutrients. The forest islands on this 120-ac parcel are critical for water storage and nutrient uptake and the most southeastern portion is actually part of the Moran Creek FEMA Flood Zone.

Alternative Conservation or Management Practice(s) Considered

Alternative solutions were weighed regarding cost analysis, practicality of install, material availability, longevity, maintenance requirements, and effective resolution of cause.

Funding Information:

Contractor	Low Estimate:	% C/S	Encumber Amount
Wolfree Enterprises	\$2400	75%	\$1200 MAX

Final Invoice (s)	TBD	Cost Share Payment Amount	TBD
--------------------------	-----	----------------------------------	-----

Funding Source	FY23 LCCMR- P23-2945	\$1200
	Landowner Amount	\$1200

Add notes if needed.

	After	Reduction Notes
Nitrogen	203.2 lbs	FERN
Sediment/TSS	.23 Tons	
Phosphorus	13.03 lbs	

Todd SWCD Mission Statement: Conservation, Protection, and Enhancement of Todd County's Natural Resources

Enter Project Name, Encumbering or Payment, submitted by, Board Meeting Date 2024.10.10.



Todd SWCD Mission Statement: Conservation, Protection, and Enhancement of Todd County's Natural Resources

Enter Project Name, Encumbering or Payment, submitted by, Board Meeting Date 2024.10.10.



G Sobiech FSP

Location Information

Parcel Number 08-0016200
 Township Name Faw Lake
 TWP, Range, Section 132-32-16
 Major Watershed Long Prairie
 Minor Watershed 14028 Fish Trap Creek

Project Information

Project Type Ecological
 Practice Types FSP
 Project Codes 106
 Field Technicians Anton
 Forester: Stanley Musielwicz, Wolftree

Project Coordinates:
 46.243468 -94.712708

POA Targeted Initiative: Water Quality, Safety & Protection

Resource Concern and Project Purpose Description

This 40-acre parcel is divided by Fish Trap Creek, one of the county’s most eroded and impaired creeks due to sediment loading by erosion. Fish Trap Creek dumps in the Long Prairie River. This true riparian forest is critical for water storage, nutrient uptake and cleansing water quality. The soils in this area are very unstable sands, so the tree roots help maintain structure along the creek banks. The Moran Creek FEMA Flood Zone nearly encircles the wooded peninsula.

Alternative Conservation or Management Practice(s) Considered

Alternative solutions were weighed regarding cost analysis, practicality of install, material availability, longevity, maintenance requirements, and effective resolution of cause.

Funding Information:

Contractor	Low Estimate:	% C/S	Encumber Amount
Wolfree Enterprises	\$700	75%	\$525

Final Invoice (s)	TBD	Cost Share Payment Amount	TBD
-------------------	-----	---------------------------	-----

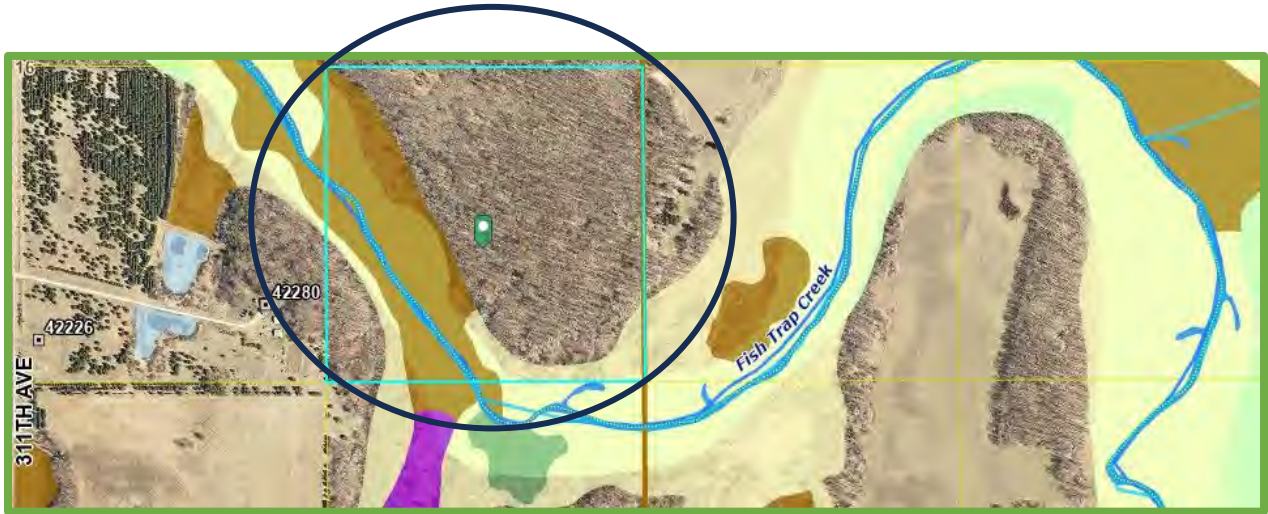
Funding Source	FY23 LCCMR- P23-2945	\$525
	Landowner Amount	\$175

After	Reduction Notes
-------	-----------------

Nitrogen	32.51bs	FERN
Sediment/TSS	.06 Tons	
Phosphorus	1.67 lbs.	

Todd SWCD Mission Statement: Conservation, Protection, and Enhancement of Todd County’s Natural Resources

Enter Project Name, Encumbering or Payment, submitted by, Board Meeting Date 2024.10.10.



Todd SWCD Mission Statement: Conservation, Protection, and Enhancement of Todd County's Natural Resources

Enter Project Name, Encumbering or Payment, submitted by, Board Meeting Date 2024.10.10.



Muehlbauer Group Waterway & Diversion

Location Information		Project Information	
Parcel Number	11-0027600	Project Type	Engineered
Township Name	Grey Eagle	Practice Types	Diversion, Grassed Waterway
TWP, Range, Section	127, 32, 20	Project Codes	362, 412
Major Watershed	Sauk River	Field Technicians	Josh Votruba
Minor Watershed	16030 – From Big Birch Lake	Engineer:	Ross Reiffenberger
Project Coordinates:	45.797519, -94.735516		

POA Targeted Initiative: Water Quality, Safety & Protection

Resource Concern and Project Purpose Description

Large amounts of stormwater runoff draining from upland properties to Big Birch Lake has caused erosion and flooding on Muehlbauer property and neighbors to the north and south. This erosion has resulted in sediment and nutrients entering Big Birch Lake. This proposed project will stabilize areas where flooding or concentrated stormwater flow has caused erosion, this will result in less sediment and nutrients flowing downstream to Big Birch Lake.

Alternative Conservation or Management Practice(s) Considered

Alternative solutions were weighed regarding cost analysis, practicality of install, material availability, longevity, maintenance requirements, and effective resolution of cause.

Funding Information:

Contractor	Low Estimate:	% C/S	Encumber Amount
Doug’s Excavating	\$15,260.00	75%	\$11,445.00
Final Invoice (s)	TBD	Cost Share Payment Amount	TBD
Funding Source	FY 2026 Riparian	11,445.00	
	Landowner Amount	\$3,815.00	

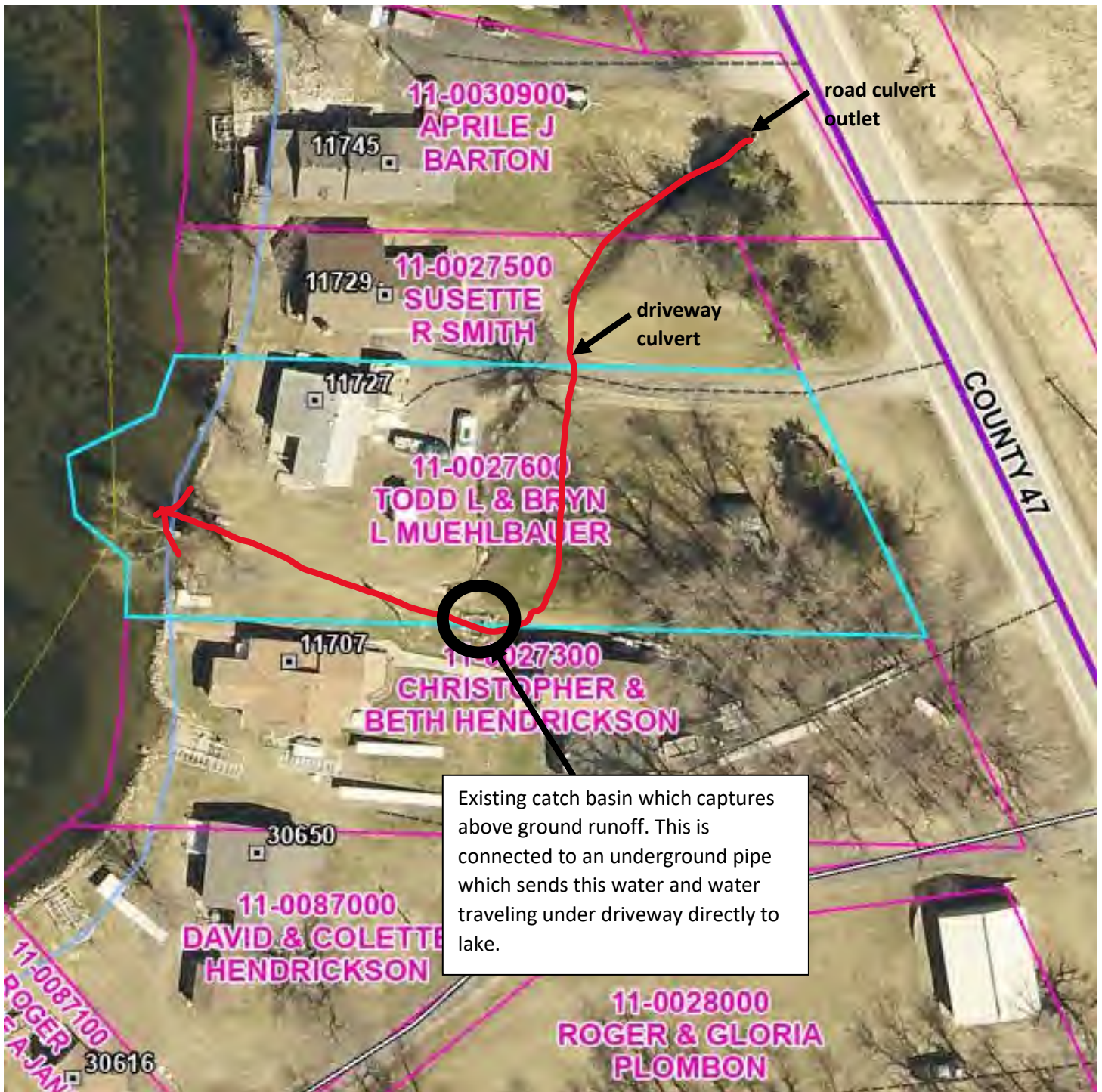
Add notes if needed.

Reduction Notes

Phosphorus	7.36 lbs/yr	BWSR Gully Stabilization Estimator
Sediment (TSS)	8.66 T/yr	
Soil	8.66 T/yr	

Todd SWCD Mission Statement: Conservation, Protection, and Enhancement of Todd County’s Natural Resources

Muehlbauer Waterway & Diversion, Encumbering, Submitted by Josh Votruba, 2026.03.12



Existing catch basin which captures above ground runoff. This is connected to an underground pipe which sends this water and water traveling under driveway directly to lake.

Red line above showing approximate movement of water on property from County Rd 47 culvert. Once water crosses driveway it travels by an underground pipe to Big Birch Lake.



Final engineering design plan above. A series of swales/waterways and diversions will stabilize areas receiving large amounts of concentrated stormwater flow coming from upland sources. An existing drainage system currently exists on property but cannot handle large rain events, thus leading to flooding and erosion. This project will complement the existing drainage system on property and stabilize areas receiving large amounts of stormwater.

Todd SWCD Mission Statement: Conservation, Protection, and Enhancement of Todd County's Natural Resources

Muehlbauer Waterway & Diversion, Encumbering, Submitted by Josh Votruba, 2026.03.12



County Rd 47 Culvert



Water from County Rd 47 culvert heading towards driveway culvert



Driveway culvert receiving water from County Rd 47 culvert & runoff from property



Arrow showing underground pipe/tile which is connected to driveway culvert



Stormwater catch basin – black arrow shows water leaving by underground pipe to outlet. Yellow arrow shows water from underground pipe from driveway culvert flowing into catch basin.



Outlet of existing drainage system

Todd SWCD Mission Statement: Conservation, Protection, and Enhancement of Todd County's Natural Resources

Muehlbauer Waterway & Diversion, Encumbering, Submitted by Josh Votruba, 2026.03.12



Renneberg FSP

Location Information

Parcel Number 07-0027901
 Township Name Eagle Valley
 TWP, Range, Section 131-34-24
 Major Watershed Long Prairie
 Minor Watershed 14047 Eagle Creek
 Project Coordinates:
 46.298117 -94.765962

Project Information

Project Type Ecological
 Practice Types FSP
 Project Codes 106
 Field Technicians Anton
 Forester: Erik Eggen

POA Targeted Initiative: **Water Quality, Safety & Protection**

Resource Concern and Project Purpose Description

40 acre FSP bordering County Ditch 29, a tributary to Eagle Creek, an impaired creek. The forests on this 40 -ac parcel are critical for water storage and nutrient uptake and protection of ground and surface water. In the middle of this parcel is a wetland, the lowest spot in the area, receiving waters from hundreds of acres of conventionally tilled agricultural land. This hardwood forest is important in up taking nutrients, acts as a nutrient sponge for the watershed in that area. In an ideal world there would be this type of buffer along the entire ditch corridor.

Alternative Conservation or Management Practice(s) Considered

Alternative solutions were weighed regarding cost analysis, practicality of install, material availability, longevity, maintenance requirements, and effective resolution of cause.

Funding Information:

Contractor	Low Estimate:	% C/S	Encumber Amount
Timberlane Forestry	\$700	75%	\$525

Final Invoice (s)	TBD	Cost Share Payment Amount	TBD
--------------------------	-----	----------------------------------	-----

Funding Source	FY23 LCCMR- P23-2945	\$1125
	Landowner Amount	\$375

Add notes if needed.

	After	Reduction Notes
Nitrogen	49.4 lbs	FERN
Sediment/TSS	.08 Tons	
Phosphorus	3.73 lbs	

Todd SWCD Mission Statement: Conservation, Protection, and Enhancement of Todd County's Natural Resources

Enter Project Name, Encumbering or Payment, submitted by, Board Meeting Date 2024.10.10.



Todd SWCD Mission Statement: Conservation, Protection, and Enhancement of Todd County's Natural Resources

Enter Project Name, Encumbering or Payment, submitted by, Board Meeting Date 2024.10.10.



Rettig FSP Payout

Location Information

Parcel Number 23-0016901
 Township Name Stowe Prairie
 TWP, Range, Section 133-35-20
 Major Watershed Red Eye
 Minor Watershed 13003 Wing River
 Project Coordinates:
 46.320229 -95.127984

Project Information

Project Type Ecological
 Practice Types FSP
 Project Codes 106
 Field Technicians Anton
 Forester: Erik Eggen

POA Targeted Initiative: Water Quality, Safety & Protection

Resource Concern and Project Purpose Description

Wetland, tributary, and Wing River water quality protection through forest management and prevention of erosion, wind and water. Forests in riparian areas are key to managing and stabilizing nutrients through uptake and root development. Trees must be managed at different stages of development to assure long-term water quality protection.

Alternative Conservation or Management Practice(s) Considered

Alternative solutions were weighed regarding cost analysis, practicality of install, material availability, longevity, maintenance requirements, and effective resolution of cause. Options were to not fund the plan and risk forest mismanagement or loss of resource and or resiliency through clearcutting or timber harvest.

Funding Information:

Erik Eggen, Timberlane Forestry	Estimate:	% C/S	Encumber Amount
	\$1060	75%	\$795
Final Invoice (s)	\$1060	Cost Share Payment Amount	\$795
Funding Source	C-25-0118 RED EYE	\$795	
	WBIF		
	Landowner Amount	\$265	

Add notes if needed.

Todd SWCD Mission Statement: Conservation, Protection, and Enhancement of Todd County's Natural Resources

Enter Project Name, Encumbering or Payment, submitted by, Board Meeting Date 2024.10.10.



	Before	After	Reduction Notes
Nitrogen	82.1 lbs.yr	14.5 lbs	
Sediment/TSS	.27 Tons/yr	.00	
Phosphorus	6.10 lbs.yr	.82	

Recommended BMPs:

36 ac Forest Stand Improvement

20 acres of Riparian Forest Mgmt

7 acres of Tree Establishment- eligible for DNR cost-share

Todd SWCD Mission Statement: Conservation, Protection, and Enhancement of Todd County's Natural Resources

Enter Project Name, Encumbering or Payment, submitted by, Board Meeting Date 2024.10.10.



Peter Ploof FSP Payout

Location Information

Parcel Number 24-0012601
 Township Name Turtle Creek
 TWP, Range, Section 12-131-32
 Choose an item.
 Minor Watershed 10501 Elk River- there is a portion of the forest in the Long Prairie watershed:
 14038- Turtle Cr

Project Information

Project Type Ecological
 Practice Types FSP
 Project Codes 106
 Field Technicians Anton
 Engineering Assistance Dean Makey

POA Targeted Initiative: **Soil Profiles: Protect Land Productivity. Effective Soil/ Land MGMT**

Resource Concern and Project Purpose Description

64 acre Forest Stewardship Plan. The Protection Goal in the Mississippi Brainerd 1W1P is to protect and enhance forest cover particularly around streams and surface waters integral for soil and water quality protections upwards to 14,765 acres over the plan’s ten-year time frame. The desired goal in the South Management Zone (Todd County) is to develop 50 management plans in 10 years. This property consisting of 65 acres, located in a Tier 2 plan protection area, borders a robust shallow and deep marsh to the east. This property is adjacent to the Tom Ploof property voted into forestry protection. Additional benefits from this project are protection and habitat enhancements for wildlife, enhancement of soil water storage capacity, and protection of current carbon storage in existing trees still in growth.

Alternative Conservation or Management Practice(s) Considered

Alternative solutions were weighed regarding cost analysis, practicality of installation, material availability, longevity, maintenance requirements, and effective resolution to cause. The solutions were no management vs. management.

Funding Information

Bid & Contractor Name	Cost Share %	Funding Amount
\$850- Dean Makey	75%	\$637.50

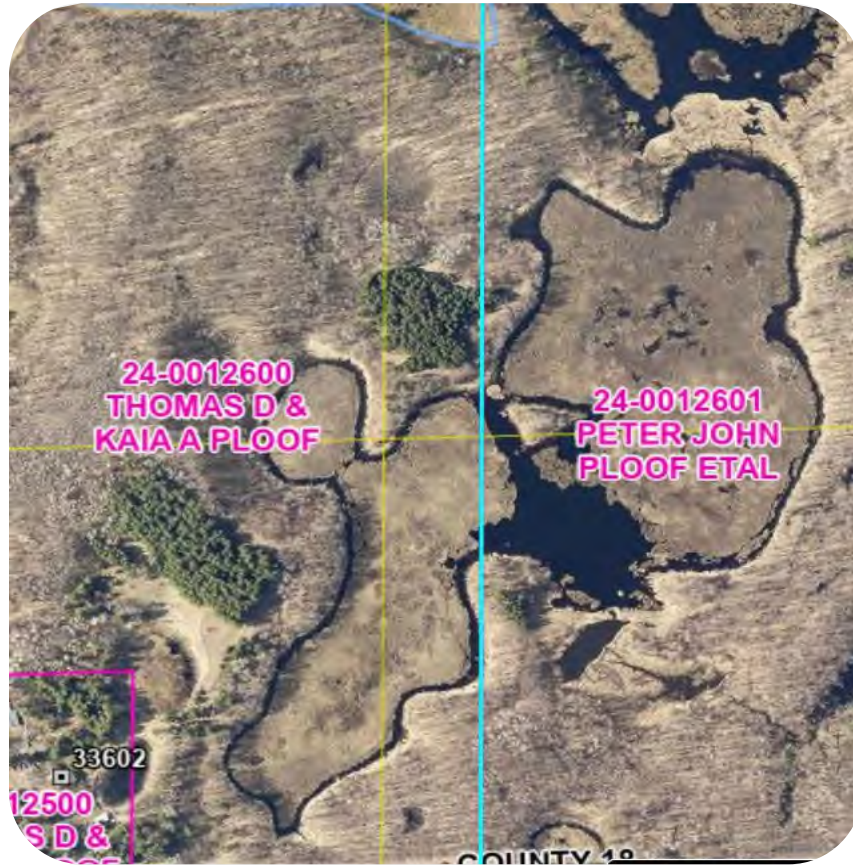
Final Invoice (s)	Cost Share Payment Amount
\$700 w/discount	\$525.00
Funding Source	
F25 Miss_Brainerd 1W1P	\$525
C24-0198	

Reductions:

- .5 Tons of sediment/yr.
- 7.09 lbs of phosphorus/yr.
- 92.8 lbs of Nitrogen/yr.

Todd SWCD Mission Statement: Conservation, Protection, and Enhancement of Todd County’s Natural Resources

Peter Ploof FSP Encumber Request submitted by Deja C. Anton for May 8, 2025



BMPs Recommended:

- ❖ 19 acres Harvest and replant
- ❖ 11 acres- Tree establishment
- ❖ 1.5 acres Brush mgmt.
- ❖ 30.5 acres Riparian forest mgmt.
- ❖ .5 acre- Wildlife mgmt.
- ❖ 1.5 acres- Leave alone.



Todd SWCD Mission Statement: Conservation, Protection, and Enhancement of Todd County's Natural Resources

Peter Ploof FSP Encumber Request submitted by Deja C. Anton for May 8, 2025



Tom Ploof FSP Payout

Location Information

Parcel Number 24-00126
 Township Name Turtle Creek
 TWP, Range, Section 12-131-32
 Choose an item.
 Minor Watershed 10501 Elk River- there is a portion of the forest in the Long Prairie watershed:
 14038- Turtle Cr

Project Information

Project Type Ecological
 Practice Types FSP
 Project Codes 106
 Field Technicians Anton
 Engineering Assistance Dean Makey

POA Targeted Initiative: **Soil Profiles: Protect Land Productivity. Effective Soil/ Land MGMT**

Resource Concern and Project Purpose Description

91 acre Forest Stewardship Plan: The Protection Goal in the Mississippi Brainerd 1W1P is to protect and enhance forest cover particularly around streams and surface waters integral for soil and water quality protections upwards to 14,765 acres over the plan’s ten-year time frame. The desired goal in the South Management Zone (Todd County) is to develop 50 management plans in 10 years. This property, located in a Tier 2 plan protection area, borders a robust shallow marsh to the east and lies on the shores of North Buckthorn Lake, a natural environment lake (in the Long Prairie watershed). The forest directly east is also in protection. Together, this area has ~320 acres of contiguous protection. Additional benefits from this project are protection and habitat enhancements for wildlife, enhancement of soil water storage capacity, and protection of current carbon storage in existing trees still in growth.

Alternative Conservation or Management Practice(s) Considered

Alternative solutions were weighed regarding cost analysis, practicality of installation, material availability, longevity, maintenance requirements, and effective resolution to cause. The solutions were no management vs. management.

Funding Information

Bid & Contractor Name	Cost Share %	Funding Amount
\$950- Dean Makey	75%	\$712.50

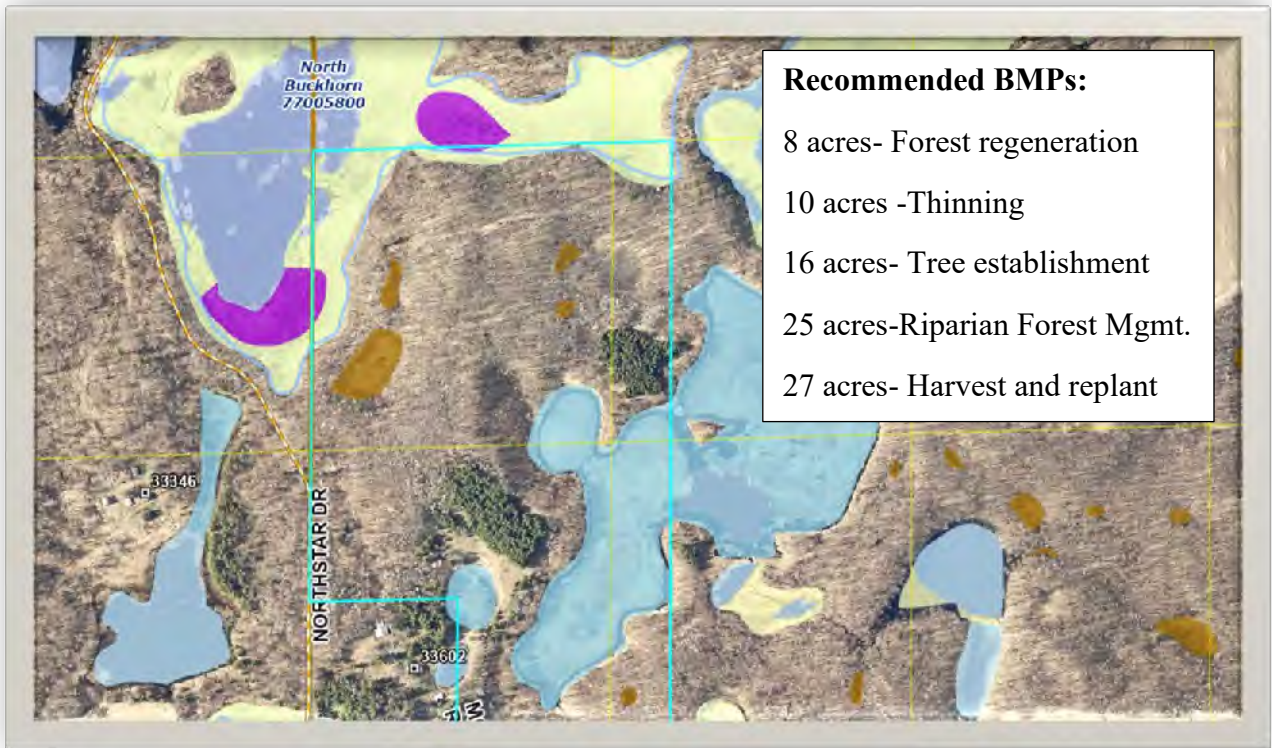
Final Invoice (s)	Cost Share Payment Amount
\$950	\$712.50
Funding Source F25 Miss_Brainerd 1W1P C24-0198	\$712.50

Reductions:

- ✓ .71 tons of Sediment/yr
- ✓ 10.08 lbs. Phosphorus/yr
- ✓ 131.9 lb. Nitrogen/yr.

Todd SWCD Mission Statement: Conservation, Protection, and Enhancement of Todd County’s Natural Resources

Ploof FSP Encumber Request submitted by Deja C. Anton for May 8, 2025



Recommended BMPs:

- 8 acres- Forest regeneration
- 10 acres -Thinning
- 16 acres- Tree establishment
- 25 acres-Riparian Forest Mgmt.
- 27 acres- Harvest and replant

Endangered Species Found on Property

FULLER'S BRISTLEBERRY



Todd SWCD Mission Statement: Conservation, Protection, and Enhancement of Todd County's Natural Resources

Plouf FSP Encumber Request submitted by Deja C. Anton for May 8, 2025



Brian Grundtner- Forest Mgmt Plan

Location Information

Parcel Number 05-0001201
 Township Name Burleene
 TWP, Range, Section 130-35-2
 Watershed Long Prairie
 Minor Watershed 14015 Eagle Creek
 Enter Project Coordinates 46.097847 -95.036582

Project Information

Project Type Ecological
 Practice Types FSP
 Project Codes 106
 Field Technicians Anton
 Engineering Erik Eggen,
 Assistance Timberlane Forestry

POA Targeted Initiative: **Soil Profiles: Protect Land Productivity with Effective Soil and Nutrient Management**

Resource Concern and Project Purpose Description

Over the years, the upper Long Prairie River Watershed has lost capital in existing healthy forests. We know that having healthy forests on the landscape gives the soil decades long a reprieve while building organic matter, vital macro and micro nutrients, and microbiomes to replenish our soils as a natural resource to farmers in the future, residents (both human and wild) and offering recreational value to the area. Healthy forests and soils are also necessary for carbon sequestration and water quality.

Alternative Conservation or Management Practice(s) Considered

80-acre Forest Stewardship Plan. Alternative solutions were weighed regarding cost analysis, practicality of install, material availability, longevity, maintenance requirements, and effective resolution of cause. The owner could do nothing and allow the trees to work through their natural process, decay, fall down-leaving inefficient periods of habitat reduction and lack of carbon sequestration and water quality cleansing. Mature trees provide limited habitat and are unable to sequester carbon like a growing forest. The owner could clear cut the forest for profit. The landowner could develop the property. Forest management is the most cost-effective protection of land value in the long term but is not the easiest or cost beneficial in the present. We are thankful for landowners like these who are willing to properly manage their forests into health for the benefit of many.

Funding Information:

Forester Name & Bid	Cost Share	Encumber Amount
Timberlane Forestry \$1100	75%	\$825

Final Invoice (s)		Cost Share Payment Amount	
	\$1100		\$825

Funding Source		
FY23 LP LCCMR		\$825
P23-2945		
Landowner Amount		\$275

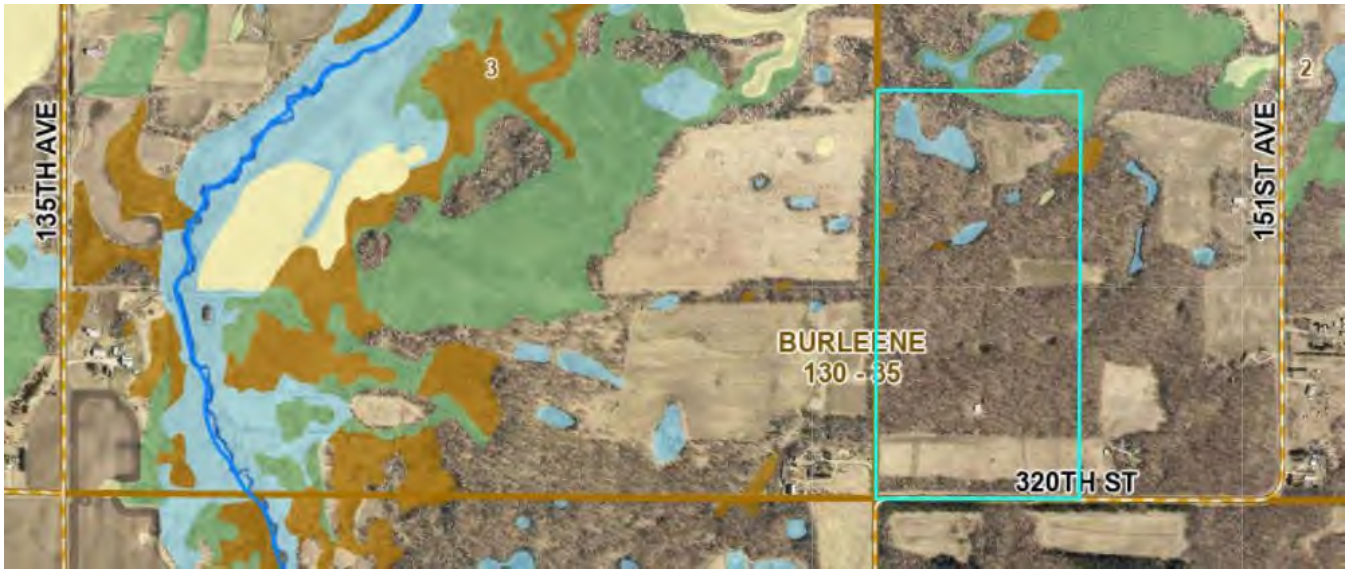
Todd SWCD Mission Statement: Conservation, Protection, and Enhancement of Todd County's Natural Resources

Enter Project Name, Encumbering or Payment, submitted by, Board Meeting Date 2024.10.10.



Reductions

	Before	Reduction Notes
Nitrogen	5.2 lbs/yr	BWSR FERN
Sediment/TSS	.25 lbs/yr	
Phosphorus	.39 lbs/yr	



BMP recommendations:

- ✓ 15 acres Tree planting
- ✓ 57 acres Selective harvest
- ✓ 8 acres Burn and regenerative management with tree planting

Todd SWCD Mission Statement: Conservation, Protection, and Enhancement of Todd County's Natural Resources

Enter Project Name, Encumbering or Payment, submitted by, Board Meeting Date 2024.10.10.

Collaborative Member Resolution Number _____

**Resolution for a Minor Amendment to
the Sauk River Watershed 10-Year
Comprehensive Watershed Management Plan (CWMP)
Chapter 6 Watershed-Wide Programs Implementation
Schedule[HM1][HM2][S13]**

WHEREAS, Minnesota Statutes §103B.801 establishes the Comprehensive Watershed Management Planning Program, also known as the One Watershed, One Plan program (1W1P) administered by the Board of Water and Soil Resources (BWSR), to align local water planning on major watershed boundaries with state strategies toward prioritized, targeted, and measurable implementation plans; and

WHEREAS, Collaborative Member adopted the Sauk River Comprehensive Watershed Management Plan (CWMP) established through 1W1P for the area of the Collaborative Member’s jurisdiction identified [HM4][S15] within the Sauk River Watershed; and

WHEREAS, the Sauk River CWMP includes implementation tables in Chapter 6 for the Watershed-wide Data, Monitoring, and Planning Implementation Program to direct funding to targeted resource management and development of biennial work plans, to be reviewed by a Policy Committee established via the execution of a joint powers collaborative agreement amongst collaborative entities implementing the Sauk River CWMP.

WHEREAS, Collaborative Member entered into a joint powers collaborative agreement with collaborating entities to implement the Sauk River CWMP, and under this agreement a Policy Committee was established to, amongst other duties, review and recommend approval of 10-year CWMP amendments to collaborative member’s governing boards.

WHEREAS, Collaborative Member has received notice from said Policy Committee that: 1) the Policy Committee has reviewed the proposed minor amendment to the CWMP Chapter 6, Page 6-7, the addition of the priority implementation action “assess the Cold Spring Dam for modification opportunities to improve ecological functions; fish passage; water quality and altered hydrology improvements.” (full language in Exhibit A), 2) the Policy Committee recommends approval of the same by each collaborative member’s governing board and 3) the Policy Committee will upon receipt of support from all the collaborative member governing board, follow the required BWSR 1W1P Operating Procedures for a minor plan amendment which includes providing a 30-day comment for plan review authorities, holding a public hearing to respond to comments received, and then submitting the minor plan amendment to BWSR.

NOW, THEREFORE, BE IT RESOLVED, Collaborative Member hereby approves of a minor amendment to the Sauk River Comprehensive Watershed Management Plan Chapter 6, page 6-7, “assess the Cold Spring Dam for modification opportunities to improve ecological functions; fish passage; water quality and altered hydrology improvements.” (full language in exhibit A) and direct the Policy Committee to fulfill the required BWSR 1W1P Operating Procedures for a minor plan amendment.

INSERT ORGANIZATION LETTERHEAD AS NEEDED

Adopted by the Collaborative Member Board of Managers/Supervisors/Commissioners this _____ day of _____, 2026.

Collaborative Member Chair or President

ATTEST:

Collaborative Member Secretary

**Exhibit A for a Minor Amendment to
the Sauk River Watershed 10-Year
Comprehensive Watershed Management Plan (CWMP)**

Chapter 6 Watershed-Wide Programs Implementation Schedule[HM6][HM7]

Chapter 6: Watershed-Wide Programs Implementation Schedule

Implementation Program: Data, Monitoring, and Planning

Page 6-7

Priority Implementation Action	Location	Measurable Output for This Activity	Timeframe	Estimated Cost	Lead LGU	Supporting Entities
Assess the Cold Spring Dam for modification opportunities to improve ecological functions; fish passage; water quality and altered hydrology improvements.	City of Cold Spring downstream from Sauk River Chain of Lakes	Complete a Feasibility Study on the Cold Spring Dam Modification.	Year 5 & 6	\$115,000	Stearns SWCD	MNDNR, City of Cold Spring, Sauk River Chain of Lakes Association

March 12, 2026

Wiley Buck
Great River Greening
2550 University Ave. W.
Ste 200 N
St. Paul, MN 55114

RE: Support of the 2026 Environmental and Natural Resource Trust Fund Grant Application

Dear Mr. Buck:

Todd SWCD agrees to support and partner with Great River Greening to apply for the 2026 Environment and Natural Resources Trust Fund Grant. The grant application includes the following activities within the Brainerd Lakes Conservation Focus Area including parts of Cass, Crow Wing, Todd, Aitkin and Morrison Counties:

1. Great River Greening will complete forestry habitat improvement projects on public and private conservation easement lands.
2. In line, the SWCDs' will partner with landowners to complete 30 forest health practices on public and private lands for local Oak Wilt eradication, an invasive species, and other practices that will continue to support healthy forest lands.

Great River Greening will serve as the fiscal agent for the project. We will partner and coordinate with the Minnesota Department of Natural Resources, Morrison, Crow Wing, Cass, Aitkin and Todd SWCDs.

This project will focus on forest resilience for all lands. Landowners can choose which programs they participate in and what level of service they receive. The grant funds would be available on July 1, 2028, if awarded.

Sincerely,

Dale Katterhagen
Todd SWCD Board Chair

*Todd SWCD... "At the Roots of Conservation:
Mapping 'routes' for landowners wishing to Enhance and Protect Natural Resources on their property"*



Memo

Date: 2/24/2026

To: BWSR Local Partners

From: Justin Hanson, Assistant Director for Regional Operations
Adam Beilke, Land and Water Programs Supervisor

RE: Prevailing wage requirements with BWSR grants

Over the past year, BWSR staff have been meeting with staff from the Department of Labor and Industry (DLI) to better understand statutory language changes related to prevailing wage that were made in 2024 and how prevailing wage now applies to work funded by BWSR grants. This memo is intended to communicate the guidance that BWSR has received from DLI and next steps BWSR plans to take to provide further guidance to grantees. We will be communicating more as this guidance develops.

What is prevailing wage?

Per DLI's [website](#), prevailing wage is the minimum hourly wage employers must pay certain workers who work on construction and public works projects where state dollars are used to fund the construction.

When does it apply on BWSR grants?

As stated in Minnesota Statutes, section 177.42, "project" as it relates to prevailing wage is defined as "demolition, erection, construction, alteration, improvement, restoration, remodeling, or repairing of a public building, structure, facility, land, or other public work, which includes any work suitable for and intended for use by the public, or for the public benefit, financed in whole or part by state funds. Project also includes demolition, erection, construction, alteration, improvement, restoration, remodeling, or repairing of a building, structure, facility, land, or public work when the acquisition of property, predesign, design, or demolition is financed in whole or part by state funds."

According to DLI, conservation work occurring on private land is considered "for the public benefit". They have stated that even if a private landowner/land occupier is hiring a contractor to complete conservation work instead of the grantee, prevailing wage may still apply if state funds are being used and the work completed meets the definition of a "project".

Indicators provided by DLI that conservation work may meet the definition of a "project" may include but are not limited to:

- Earthmoving or the rearrangement of terrain;
- The work involves alteration or change in the character, nature, or use of land;
- Repurposing of the land;
- The permanence of the work performed;
- Whether the work results in land of a different nature than prior to the work, including repairing or restoring land to a purpose it is no longer fit for or returning the land to its previous, but not current, state;
- The work is not routine in nature.

According to DLI, the following are examples of typical conservation practices that would generally meet their definition of a “project”:

- Conservation Cover (transition from row crops to permanent vegetative cover)
- Grade Stabilization Structure
- Streambank and Shoreline Stabilization
- Water and Sediment Control Basin

DLI staff have clarified that some conservation work may be considered maintenance and therefore not considered a “project” if it leaves the land in its current state after the work is completed. The following conservation work may commonly constitute maintenance if the work does not result in alteration or change in the character, nature, or use of the land and is not performed in connection with other covered work:

- Vegetation plantings;
- Landscaping;
- Pruning;
- Seeding/vegetation establishment;
- Application of herbicide;
- Harvest, rolling, crimping, and/or tilling;
- Application of fertilizers and/or amendments;
- Mowing/harvest;
- Prescribed burning;
- Removal of invasive species.

DLI staff have stated that for BWSR competitive grants, if the grant award is \$2,500 or more (when only one trade is involved to complete project work) or \$25,000 or more (when multiple trades are required to complete project work), and there are any activities in the grant work plan that meet the definition of a “project”, prevailing wage requirements will apply to the entire grant. Even if individual projects are completed with separate landowners/land occupiers, DLI would view the entire grant as the “project”.

Guidance from DLI indicates that if multiple labor descriptions (codes) are expected for a project, this likely means more than one trade will be involved. Further guidance may be provided by DLI regarding how to determine the number of trades for a project.

DLI staff have stated that for BWSR formula grants, the \$2,500 or \$25,000 thresholds apply to cost of projects receiving grant funding on an individual basis. The dollar amount considered is the total cost of completing the

work, not the amount of financial assistance provided. Unlike competitive grants, the “project” is not the entire grant but instead each project with a landowner/land occupier is looked at separately from one another.

BWSR is continuing to meet with DLI regarding how materials and products purchased by a landowner/land occupier are considered regarding the project cost. Further guidance will be provided once this has been clarified.

Three scenarios given by DLI where prevailing wage would not apply include:

- If the work is being completed on Tribal projects and/or land;
- If the work is being completed by the Conservation Corps Minnesota; or
- If the work is being completed by public employees.

The review of possible prevailing wage violations is a complaint-driven process. Only after a complaint is received by DLI will they investigate the employer’s payroll documents. A landowner and/or land occupier that is completing work themselves may be subject to prevailing wage requirements but DLI review will occur only if there is a complaint filed asking DLI to investigate. To the extent a landowner and/or land occupier is performing work on their own project, there is likely to be considerable latitude in how their compensation is determined and reported.

For projects receiving both state and federal funding, prevailing wage requirements of both state and federal law would apply. A contractor is required to pay the rate that is the most beneficial to the employee. Due to potential differences in some prevailing wage details (ex. rates, overtime), compliance with federal Davis-Bacon requirements does not necessarily mean state prevailing wage requirements are being met.

If questions remain and grantees are still uncertain as to whether their work meets the definition of a “project” and is subject to prevailing wage requirements, DLI recommends completing a [Project Assessment Form](#). DLI would prefer that these forms are routed through BWSR for review before they are sent to DLI. We are currently discussing what level of involvement is appropriate for our agency in this process.

What is required?

According to DLI, when prevailing wage applies, all bid requests and RFPs must state that the project is subject to prevailing wage to ensure that incoming bids have factored prevailing wage rates into their submittal. DLI has stated that a prevailing wage form should accompany these bid submittals. DLI has also stated that all work on the project must be performed under contracts that specifically state the prevailing wage rates, prevailing hours of labor, and hourly basic rates of pay, and include the following language:

- *“Pursuant to Minnesota Statutes 177.41 to 177.44 and corresponding Minnesota Rules 5200.1000 to 5200.1120, this contract is subject to the prevailing wages as established by the Minnesota Department of Labor and Industry. Specifically, all contractors and subcontractors must pay all laborers and mechanics the established prevailing wages for work performed under the contract. Failure to comply with the aforementioned may result in civil or criminal penalties.”*

According to DLI, the contract for a project must also provide that the project owner must demand, and any contractor on the project must furnish, compliance documents no more than 14 days after the end of each pay

period. Guidance from DLI includes that contractors and project owners must retain these records for a minimum of three years after final payments are made. Reporting forms and detailed instructions are available on [DLI's website](#).

Many BWSR grantees have unique responsibilities as it relates to the law and implementation of projects. Grantees often deliver grant funds through cost-share programs with landowners and/or land occupiers who are working directly with contractors to construct their project. This requires grantees to work collaboratively with landowners and/or land occupiers to clearly communicate grant-related requirements. DLI considers a contract between the landowner/land occupier and contractor that includes required prevailing wage language to be best practice. Guidance from DLI has stated that there is risk in not utilizing a contract that communicates prevailing wage requirements with a contractor as it could lead to a violation, though not all projects would carry the same degree of risk based on the complexity of the project and size of contractor(s) involved. Communicating the requirements of prevailing wage will be the best way to ensure compliance with prevailing wage laws and reduce risk to the grantee.

BWSR is currently discussing expectations for monitoring compliance with prevailing wage requirements, possible updates to our optional financial assistance contract templates to include prevailing wage language, and other guidance materials (ex. prevailing wage cover sheet) that can be provided for grantees to use when working with landowners and/or land occupiers on projects subject to prevailing wage requirements.

How to determine the rates?

The labor codes for purposes of prevailing wage can be found in Minnesota Rules Parts 5200.1101 and 5200.1102. DLI has developed [guidance](#) regarding appropriate labor codes for common tasks related to conservation work. If a specific job code does not exist for the work, DLI's guidance has been to use "Common Laborer-101" or "Landscaping Laborer-103". For conservation projects, [Highway and Heavy wage rates](#) have historically been applied. Questions on labor codes can be submitted using a [Classification and Code Clarification Form](#) that should be submitted to dli.prevwage@state.mn.us.

What's next?

BWSR grant agreements currently include the following language, consistent with templates provided by the Office of Grants Management regarding prevailing wage: *"The Grantee and any subrecipients must comply with prevailing wage rules per Minnesota Statutes 177.41 through 177.50, as applicable."*

BWSR is currently finalizing guidance provided by DLI and seeking further clarifications to help guide our future communications on prevailing wage, including how it applies to our easement programs. As stated earlier, BWSR plans on developing guidance to our grantees which may include a separate chapter of the Grants Administration Manual on prevailing wage along with updates to our optional financial assistance contract templates and the creation of a cover sheet document that can be used with landowners/land occupiers.

For any questions on prevailing wage as it relates to BWSR grants, please reach out to Justin Hanson (Justin.Hanson@state.mn.us) and Adam Beilke (Adam.Beilke@state.mn.us).